

AGC RAKE CADDY

Instruction Manual and Parts List

Use this manual for safety instructions and operating instructions.
Make sure that everyone who operates this machine has read this manual completely!
Save for future use.

IMPORTANT

It is very important to follow the instructions for adjusting ground pressure. Failure to adjust ground pressure will allow the Rake to dig into the soil. This will result in poor performance and possible damage.



OGDEN

Metalworks, Inc.
301 N. Marilyn Avenue – PO Box 128
Ogden, IL 61859
217-582-2552 – Fax 217-582-2746
www.ogdenmetalworks.com

Table of Contents

Introduction.....	2
Safety Instructions.....	3
Decals.....	4
Assembly.....	5
Operation.....	7
Ground Pressure Adjustment.....	9
Transporting.....	10
Maintenance.....	10
Lubrication.....	10
Cylinder Parts.....	11
Parts List.....	12
Center Wheel Kit Parts List.....	14
Center Wheel Kit installation.....	15
Tongue Extension Parts List.....	16
Warranty Policy and Warranty Card.....	17

Introduction

The AGC Rake Caddy has been engineered and built for ease of operation and long service life. The AGC Wheel Rake Caddy has been designed to transport and operate a pair of 4 Wheel, 5 Wheel or 6 Wheel Rakes in a V-type configuration.

It is important that you thoroughly understand the operation of the wheel rake caddy before use. Read through this manual completely, watching especially for safety symbols (see illustration below) which will alert you to possible safety hazards.



The word “**NOTE**” will alert you to special information such as specifications, techniques, reference information and other supplementary information. This safety alert symbol is used throughout this manual to identify possible safety hazards. It is the user’s responsibility to read the operator’s manual and comply with all the instructions pertaining to operation and maintenance. It is also the user’s responsibility to inspect the machine at regular intervals and repair or replace worn or damaged parts when continued use would cause damage or excessive wear to other parts. The word “**Important**” is used to point out a note which is of an immediate and urgent nature.

The manufacturer reserves the right to make improvements, discontinue or change specifications, models or design without notice and without incurring obligation.

When ordering parts for your wheel rake caddy, please specify the part number and the part description as shown in the parts listing in this manual. Please give the serial number of the wheel rake caddy in all correspondence when referring to the wheel rake caddy. Record the serial number and purchase date here for future use.

Serial Number _____

Model _____ **Purchase date** _____

IMPORTANT: When this machine is traded or sold, make sure this manual accompanies the machine so future operators will have complete operating instructions and safety warnings available to them.

Specifications

Weight, approximate.....	585 lbs.
Overall width of tool bar w/wings extended.....	91”
Overall length.....	178 ½”
Hydraulics.....	Two-way Hydraulics required
Rake capabilities.....	Two 4, 5 or 6 wheel rakes
Speed.....	Do not transport or operate at speeds greater than normal tractor speeds, 15 to 20 MPH

Safety Instructions



CAUTION: This machine should never be operated by anyone who is not familiar with the product and has not read the instruction manual. Do not allow children to operate the Wheel Rake Caddy.

All persons operating this machine should read and understand the Instruction Manual.

Read and understand all safety decals located on the machine.

Keep Safety Decals clean and legible at all times.

Replace Safety Decals that are missing or become illegible.

Do not allow anyone to ride on the machine.

Be sure machine is attached securely to the tractor before operating or transporting.

Inspect the Wheel Rake Caddy daily. Lubricate and repair or replace parts as needed.

Maintain and keep all Safety Shields in place.

Make sure Rakes are locked whenever they are in the folded position before working around the machine or for transporting.

Before operating the machine inspect for loose or damaged bolts or parts and make necessary repairs before starting.

All bystanders should be a safe distance from the machine when in operation.

High-pressure oil leaks can penetrate skin causing serious injury. Do not use your finger or other skin to check for leaks.

Apply parking brake and stop tractor engine before dismounting tractor.

Keep hands, feet and clothing away from moving parts.

Never transport faster than surface conditions allow.

Display the SMV Emblem when transporting with a tractor.

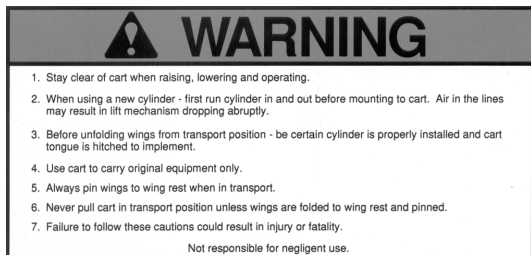
Make sure you are in compliance with all local regulations regarding transporting agriculture equipment on public roads and highways. Consult your local law enforcement agency for further details.

Ensure that the Slow Moving Emblem (SMV) and all reflectors and lights required by the local highway and transport authorities are in place and are clean and visible by overtaking and oncoming traffic.

Decals

Important: The following decals or similar decals are located on your Hay Rake Caddy. Before you operate the Hay Rake Caddy, read and understand the purpose for each decal. Replace any damaged decals. Keep all decals clear and readable.

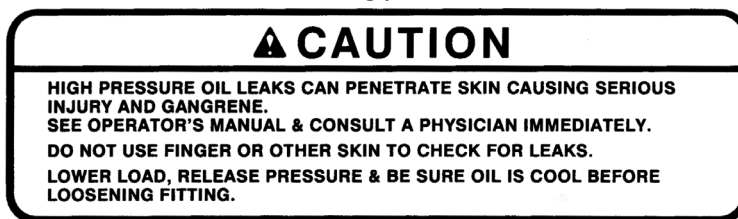
1.



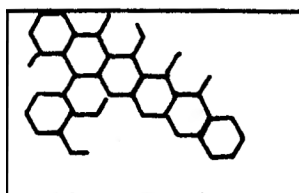
2.



3.



4.



Ogden Wheel Rake Caddy Decal Parts List

Item No.	Part No.	Description	Qty.
1	0-52	Decal, Warning Operating	1
2	0-70	Decal, Caution Stay Clear	2
3	0-82	Decal, Hydraulic Caution	1
4	0-71	Decal, Red Reflector	2

ASSEMBLY

CAUTION!



Wear proper protective equipment such as safety glasses and protective shoes when assembling.

1. Layout and identify all parts. Many parts will be partially assembled by the manufacturer. The main frame and swing arms are assembled, along with the tension spring and adjustment chains, and the hydraulic cylinder is installed. The spindle and hubs are also installed on the axle.
2. Support the main frame on sturdy stands and install the axle assembly under the main frame. Measure from the rear of the main frame 17" to 18" to the back of the axle tube. Secure the axle with three 4" x 5 1/2" x 5/8" u-bolts, lockwashers and nuts. (See Illustration 1)

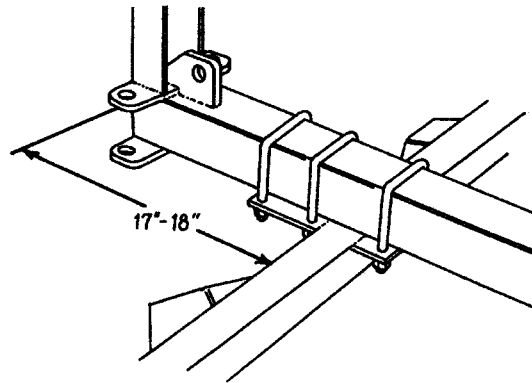


Illustration 1

The axle may need to be moved forward or backward until the caster wheels on the wings roll in the proper location on the axle ramps (See Illustration 2). Tighten the u-bolts when the axle is properly located.

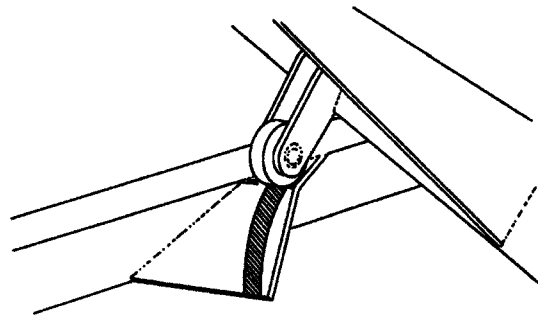


Illustration 2

3. Install the tongue on the main frame using three 5/8" x 2" bolts, lockwashers and nuts. Install the reinforcing plate beneath the tongue and main frame using six 1/2" x 1 1/2" bolts, lockwashers and nuts. If the optional extended tongue is used, install the extension between the main frame and tongue using the bolts, lockwashers, nuts and reinforcing plate provided.
4. Install the threaded rod hose holder in the threaded hole on the top of the tongue. Install a 1/2" jam nut on the rod before installing. Tighten the jam nut after the rod is positioned.
5. Install the support jack on the tongue using the pin supplied.

6

6. Install the tires on the wheel rims supplied and install the rims on the hubs. Torque the four lug bolts on each wheel to 75 Ft-lbs.

Note: The height of the tires will effect the operation of the wheel rakes. It is recommended that 195 x 14” tires be used.

7. Two hydraulic hoses, one ¼” x 196” and one ¼” x 208” are included. Connect the longer hose to the rear port of the hydraulic cylinder using a 90 degree elbow. Connect the shorter hose to the front port using a 90 degree elbow. Route the hoses through the hose holder on the tongue. Install the restrictor swivel on the male end of one hose. When the cylinder is replaced or reinstalled, the ports must go to the left side of the carrier when facing forward.

Important: Do not operate the carrier without the restrictor installed.

Before installing hydraulic lines, check for foreign material in the lines. Keep hoses and fittings clean at all times. Be sure all connections are properly sealed to avoid leakage.

CAUTION! Do not exceed manufacturers’ maximum hydraulic system pressure at 2500 psi.



If the optional tongue extension is used, install the two ¼” x 48” hoses included in the kit on the 196” and 208” hoses using the ½” NPT couplers provided. Install the restrictor fitting on the end of one extension hose.

WARNING! Always wear protective eye goggles and use a magnifying glass or hold a piece of wood on suspected leaks. Pinhole hydraulic leaks can penetrate skin. Do not touch.



Note: If fluid penetrates the skin, it must be surgically removed within a few hours by a doctor familiar with the form of injury or gangrene may result. Make sure the weight of the machine has been taken off the hydraulic cylinder before disconnecting hydraulic hoses.

8. Install the hose holder on the tongue center just forward of the cylinder using a capscrew and lockwasher. Secure the hoses on the holder with the clip, capscrew, lockwasher and nut.

9. Install the rake mount assemblies on the wings, as shown, using two u-bolts, lockwashers and nuts to secure each assembly.

Note: Left and right mounting heads are used. See parts lists for proper identification.

Measure from the front edge of the wing to the center of the rake mount to determine the approximate location of the rake. (See Illustration 3)

4 Wheel Rakes	35”
5 Wheel Rakes	25”
6 Wheel Rakes	13”

These settings are only approximate settings. The final position on the wing is determined by the desired width of the windrow. Moving the rake mounts forward on the wing make the windrow wider. Moving the rake mounts rearward makes the windrow narrower.

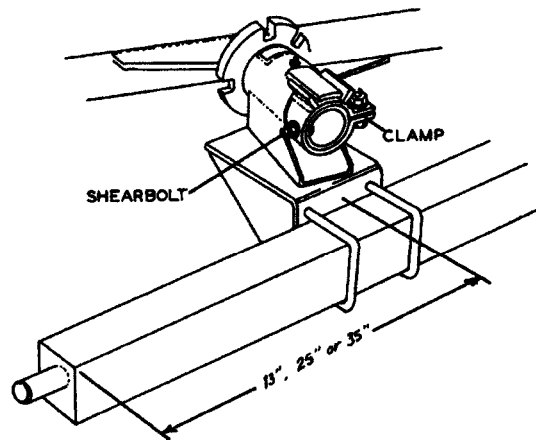


Illustration 3

10. Install the wheel rakes on the mount tube by inserting the rake main frames into the tubes on the rake mounts. This operation can be made easier if the carrier is connected to the tractor tongue, hydraulics are connected and the wings are extended. Install the clamps on the rake tubes. Tighten the $\frac{1}{2}$ " x $1\frac{1}{2}$ " bolts, lockwashers and nuts snugly. The ears at the top of the clamp should be on either side of the tab on the mount tube so the rake can "float" as it works.

Important: When the rake is positioned correctly, drill a hole through the clamp and the rake tube and install a $\frac{5}{16}$ " shear bolt, lockwasher and nut (See Illustration 3).


Before operating this machine, Lubrication of specific parts must be completed. Lubricate the points listed before operating for the first time and periodically as shown in the chart (See page).

Before operation, check tightness of lug bolts and spindle screws.


Operation

Important: Before operation, the operator should be familiar with these operation instructions and operation of the tractor. Do not allow an unqualified person or one under the influence of medication or intoxicating substances to operate the tractor.

1. Connect the machine to the tractor tongue using a $\frac{3}{4}$ " hitch pin with retaining clip. The adjustable jack will allow the tongue to be raised or lowered during hookup. After hookup to the tractor, store the jack in the horizontal position.
2. Connect the hydraulic inlet and outlet hoses to the tractor system.

CAUTION!  **Make sure a restrictor is installed on one of the hydraulic lines. Failure to use a restrictor will allow the machine to fold and unfold rapidly and could result in damage to the machine and injury to bystanders**

3. To lower the rakes to the working position, pull the transport pins for each wing and apply hydraulic pressure to retract the cylinder. The wings will spread apart and the rake will lower to the working position as the caster wheels move down the axle ramps. The transport pins can be stored in the raised position by installing clips in the upper holes.

CAUTION!  **Operate the hydraulic cylinder through the cycle a few times to expel all air from the system. Failure to fully charge the hydraulic system could result in injury when the rakes fall abruptly to the ground.**

CAUTION! Make sure the area around the machine is clear before lowering. Do not lower rakes when people or pets are near the rakes or folding mechanism.



4. Set the rake angle by repositioning the 5/8" bolt in the rake mounting bracket. Six holes are available for adjustments (See Illustration 4).

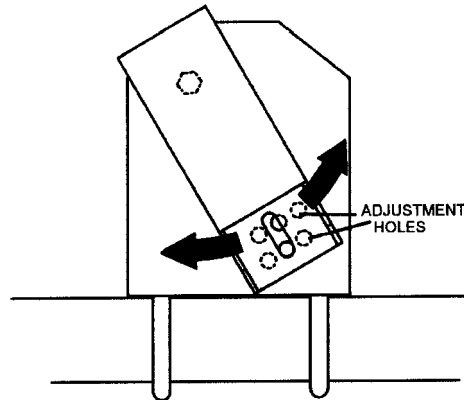


Illustration 4

See the rake operator's manual for more information on setting the rakes.

5. Working speed is normally 5 to 10 mph. Speed varies with different hay conditions or terrain. Consult the rake operator's manual for complete operation instructions.

6. To raise the rakes, apply hydraulic pressure to the hydraulic cylinder. When the wings are in the retracted position, install the transport pins in the frame to lock the wings in place.

Note: The wings must be adjusted so that both wings retract into the transport position at approximately the same time. With the rakes removed from the wings, disconnect the adjustable link between the sliding cylinder mount and the left wing. Clear the area around the machine and extend the cylinder until the right wing just retracts into the lock position. Manually retract the left arm to the same position and adjust the link until the pin drops into the pivot point. Tuning the threaded rod end "in" will cause the wing to move towards the tongue. Secure the pin when the adjustment is complete (See Illustration 5).

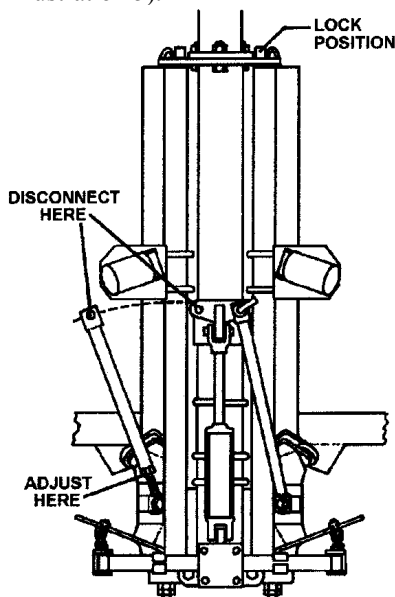
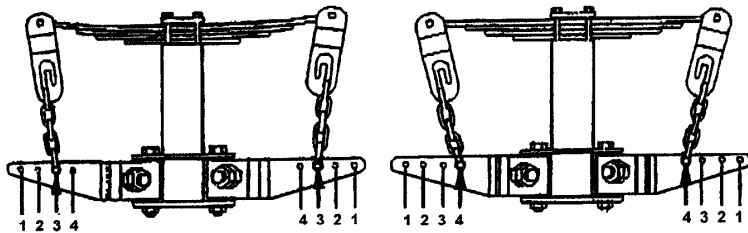


Illustration 5

Adjusting Ground Pressure Setting

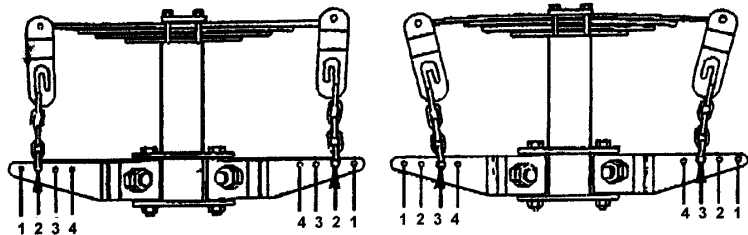
7. Use this chart to adjust the rake ground pressure. When set properly, individual rake wheels should be light enough to float over the ground while maintaining a constant ground speed. Each side of the leaf spring is equipped with a half link quick adjusting bracket. To adjust, fold the caddy up and slide the chain over to the desired settings. Each step equals a half link adjustment.

CAUTION! Never try to adjust spring tension with the rake in the working position. Raise the rakes to the transport position before making adjustment. Failure to do so could result in serious injury.



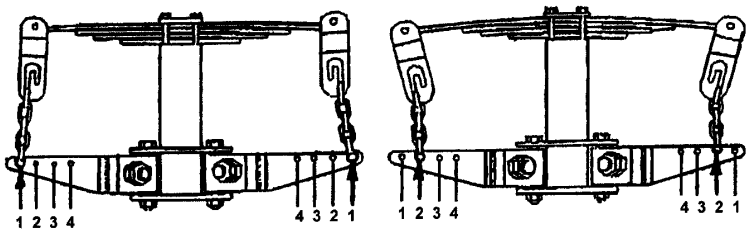
8 WHEEL RAKE SETTINGS

The chain clevis should be in holes 3 or 4 with the leaf spring slightly bowed up or flat.



10 WHEEL RAKE SETTINGS

The chain clevis should be in holes 2 or 3 with the leaf spring flat or bowed down slightly.



12 WHEEL RAKE SETTINGS

The chain clevis should be in holes 1 or 2 with the leaf spring bowed down slightly to bowed down.

Illustration 7

8. The width of the windrow can be adjusted by moving one or both rakes forward on the wings. To do this, loosen the u-bolts securing the rake mounts and reposition the mounts. Moving the mounts forward will widen the windrow. Moving the mounts back will make the windrow narrow. Extend the wings and check for clearance around the tires before operating.

Operating with one rake

When one rake is to be used alone, leave the locking pin in place on the wing not used and pull the pin securing the linkage between the sliding cylinder mount and the unused wing. The operation of the remaining rake is not affected.

Transporting

To transport, retract the wings until they are in place against the tongue and install the locking pins so the pins capture the lugs on the wings. Secure the pins in place with hairpin cotter pins.

CAUTION! Never transport rakes without locking pins in place.



Avoid sharp turns during transport to prevent contact between the rakes and the machine. Slow down when approaching trees, fences or ditches to avoid damage to the rakes.

CAUTION! When towing on public roads, a slow moving vehicle (SMV) sign should be installed on the tractor so it is visible to vehicles following. Warning lights should also be installed on the tractor so they are visible to other motorists. Comply with state and local safety requirements at all times.



Maintenance

1. Check hydraulic hoses periodically for cracks, abrasions or leaks. Replace defective hose immediately. Replace worn or broken hoses and fittings with factory replacement parts only.
2. To extend the life of the cylinder and hoses, store the machine under cover. If cover is not available, remove the cylinder and hoses and store under cover.
3. Check tightness of lug bolts and spindle setscrews after one hour of operation and every six months thereafter. Check tire pressure whenever maintenance is performed.

Lubrication

Lubricate all points before operating for the first time and periodically as shown in the chart below. Keep all lubrication fittings free of dirt and contaminants.

A	Double Wing Hinge	(1)	Every 8 Hours of Operation
B	Wing Caster Wheel	(1)	Every 8 Hours of Operation
C	Cylinder Slide Mount	(2)	Every 8 Hours of Operation
D	Wing to Axle Support (Top Surface of Axle)	(2)	Every 8 Hours of Operation
E	Rake Mounting Brackets	(1)	Every 20 Hours of Operation
F	Swivel Hitch	(2)	Every 20 Hours of Operation
G	Jack Crank	(2)	Every 6 Months of Operation
H	Wheel Bearing	(3)	Every 6 Months of Operation
(1) Grease zerk until excess escapes (2) Smear grease on contact surfaces (3) Clean and repack with grease			

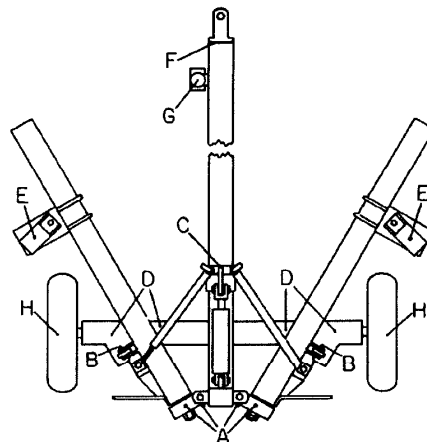
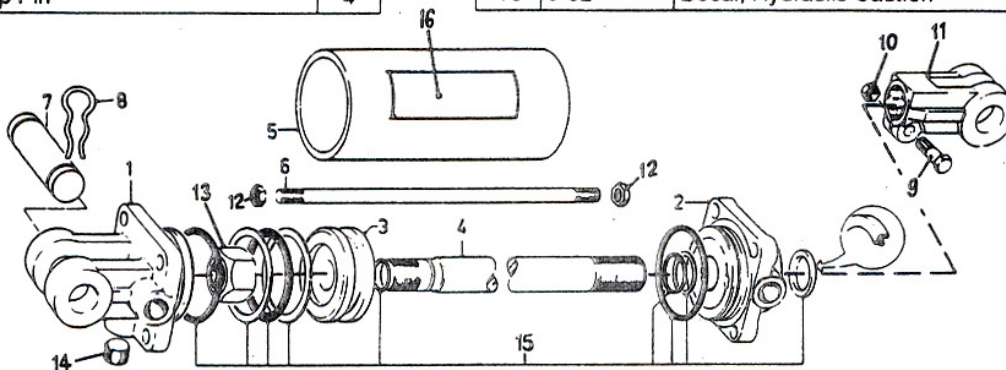


Illustration 8

OMI WHEEL RAKE CADDY
AGC 8 TO 12
HYDRAULIC CYLINDER, 2 1/2" x 8", PART NO. 0-61
PARTS LIST

Item	Part No.	Description	Qty.
1	492401	Clevis Cap	1
2	492421	Rod Cap	1
3	492529	Piston	1
4	492028	Rod	1
5	491668	Cylinder Tube	1
6	492218	Tie Rod	4
7	134953	Pin, 1"	2
8	134952	Clip Pin	4

Item	Part No.	Description	Qty.
9	119254	Bolt, Clevis	1
10	128230	Nut, Clevis	1
11	458599	Rod Clevis	1
12	128230	Nut, Tie Rod	8
13	129090	Nut, Piston	1
14	186530	Plug	1
15	492902	Seal Kit	1
16	0-82	Decal, Hydraulic Caution	1

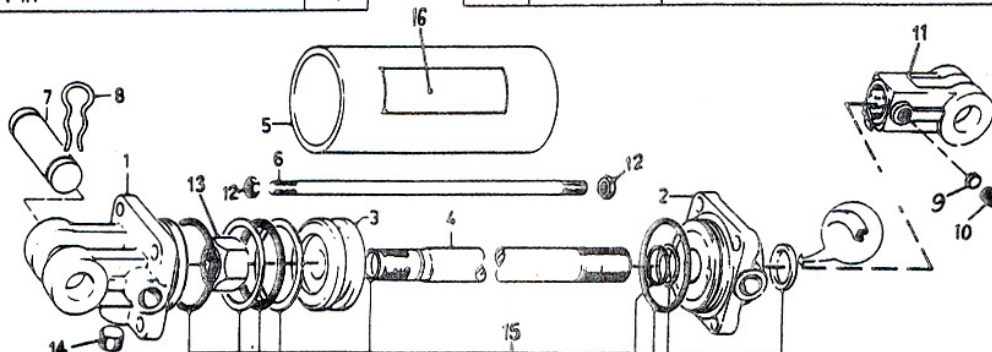


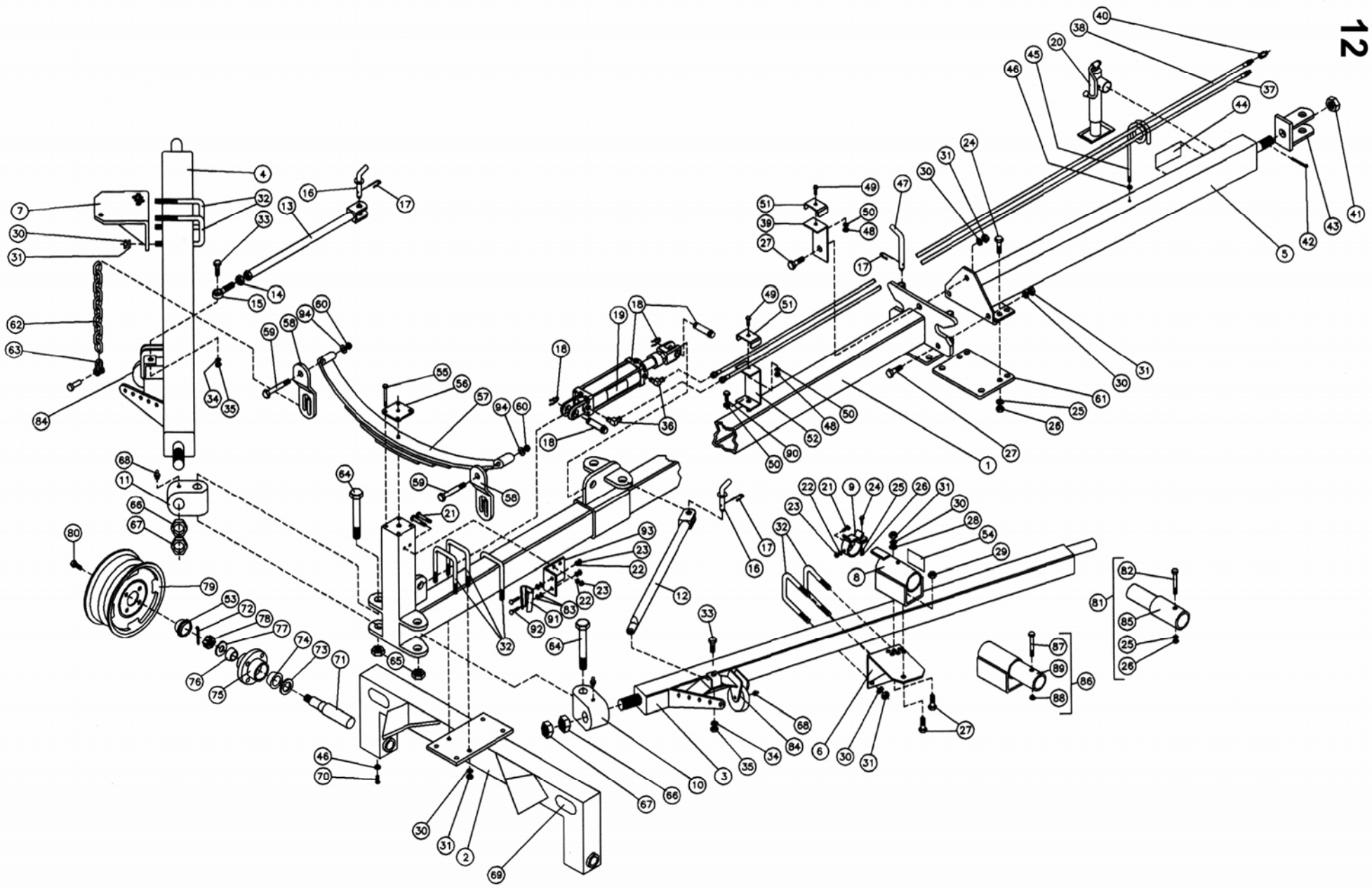
NOTE: One of two cylinders can be used. Identify the correct cylinder by checking the rod clevis before ordering parts. Cylinder number 0-61 uses a bolt and nut to lock the clevis on the rod. Cylinder 0-61-2 uses a thread lock and setscrew.

OMI WHEEL RAKE CADDY
AGC 8 TO 12
HYDRAULIC CYLINDER, 2 1/2" x 8", PART NO. 0-61-2
PARTS LIST

Item	Part No.	Description	Qty.
1	492807	Clevis Cap	1
2	492808	Rod Cap	1
3	492529	Piston	1
4	492699	Rod	1
5	491668	Cylinder Tube	1
6	492218	Tie Rod	4
7	134953	Pin, 1"	2
8	134952	Clip Pin	4

Item	Part No.	Description	Qty.
9	498006	Thread Lock	1
10	148390	Setscrew	1
11	452650	Rod Clevis	1
12	128230	Nut, Tie Rod	8
13	129090	Nut, Piston	1
14	186530	Plug	1
15	639573	Seal Kit	1
16	0-82	Decal, Hydraulic Caution	1

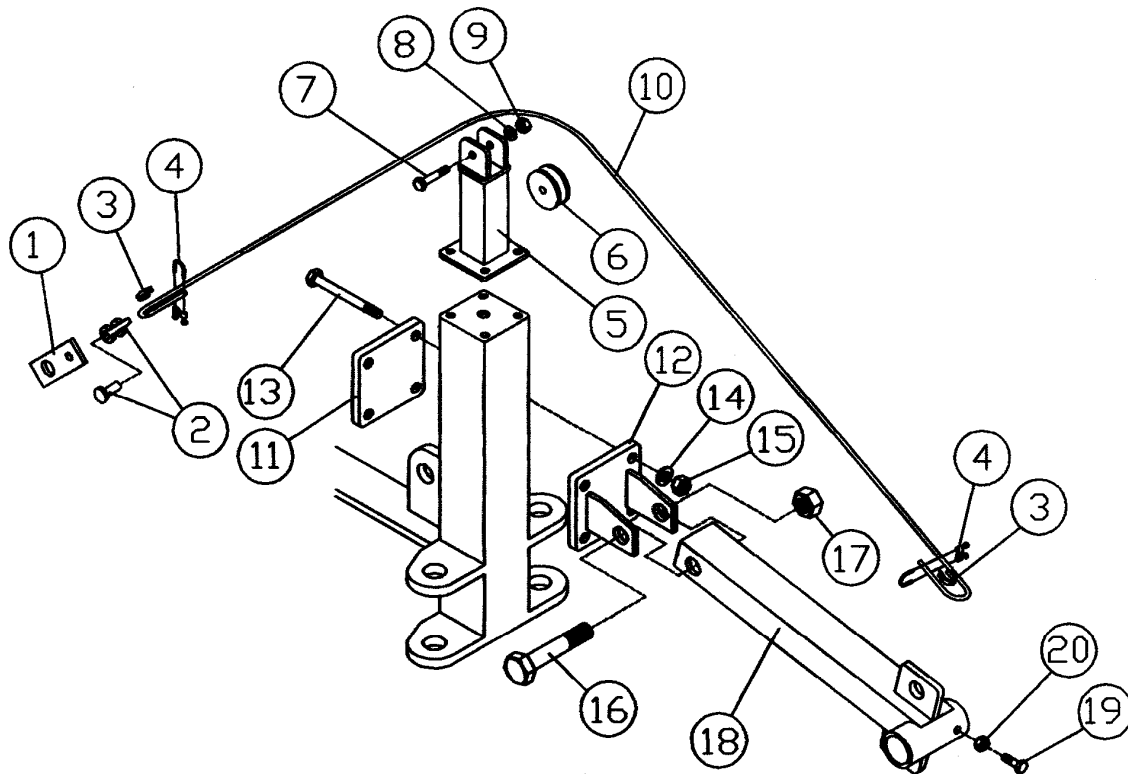




AGC Rake Caddy Parts List

Item	Part No.	Description	Qty.	Item	Part No.	Description	Qty.	Item	Part No.	Description	Qty.
1	0-299	Main Frame	1	34	0-169	Lockwasher, 3/4"	2	66	0-165	Hex Nut, 1 1/4" - 7	2
2	0-315	Axle	1	35	0-170	Hex Nut, 3/4"-10	2	67	0-166	Hex Jam Nut, 1 1/4" - 7	2
3	0-309	Arm, RH	1	36	0-59	Male Elbow, 90 Deg., 3/8" -18 NPT x 9/16" -18 JIC	2	68	0-66	Grease Zerk, 1/4" - 28, Straight	8
4	0-308	Arm, LH	1	37	0-60	Hyd. Hose, 1/4" -3/8" Swivel x 1/2" NPT, 208"	1	69	0-71	Decal, Red Oblong Reflector	2
5	0-301	Tongue	1	38	0-58	Hyd. Hose, 1/4" -3/8" Swivel x 1/2" NPT, 196"	1	70	0-178	Squarehead Setscrew, 1/2" -13 x 1 1/2"	2
6	0-314R	Adjustable Mounting Plate, RH	1	39	0-54	Hose Holder	1	71	0-74	Spindle, 1 5/8" x 11 1/2"	2
7	0-314L	Adjustable Mounting Plate, LH	1	40	0-57	Swivel Restrictor, 1/2" NPT, 1/32" Orifice	1	72	0-152B	Cotter Pin, 5/32" x 1 3/4"	2
8	0-312	Pipe Mounting Head	2	41	0-151	Hex Slotted Nut, 1 1/4" -7	1	73	0-75	Seal, CR14975	2
9	0-313	Locking Collar	2	42	0-152	Cotter Pin, 3/16" x 2"	1	74	0-76	Inner Bearing, LM67048	2
10	0-307	Hinge Block, RH	1	43	0-300	Swivel Clevis	1	75	0-78	Hub w/Cups	2
11	0-306	Hinge Block, LH	1	44	0-52	Decal, Warning	1	76	0-77	Outer Bearing, LM11949	2
12	0-311	Lift Arm, RH	1	45	0-53	Hose Holder, 3/8" Threaded	1	77	0-79	SAE Flatwasher, 3/4"	2
13	0-310	Adjustable Lift Arm, LH	1	46	0-179	Hex Jam Nut, 3/8"	1	78	0-80	Hex Slotted Nut, 3/4" -16	2
14	0-167	Jam Nut, 1 1/8"-7	1	47	0-55	Transport Pin, 5/8"	2	79	0-73	Rim, 5" x 14", 4 Bolt	2
15	0-69	Adjustable Linkage	1	48	0-159	Hex Nut, 3/8" -16	7	80	0-72	Lug Bolt, 1/2 -20 x 1", GR5	8
16	0-68	Lift Arm Pin, 5/8"	2	49	0-157	Hex Capscrew, 3/8" -16 x 1 1/2", GR5	2	81	OT301	Extension Tube Kit, Includes #82,#24,#25 & #85	
17	0-56	Hair Pin Cotter, .178 x 3 9/16"	4	50	0-158	Lockwasher, 3/8"	7	82	OT183	Hex Capscrew, 1/2" -13 x 4 1/2"	2
18	0-61	Hydraulic Cylinder, 2 1/2" x 8"	1	51	0-302	Hose Holder Clip	2	83	MCH38F	Flatwasher, 3/8"	4
19	0-82	Decal, Hydraulic Caution	1	52	0-303	Hose Holder, 3/8" Hole	1	84	LHWW	Weld on Wing Wheel Assembly	1
20	0-51	Tongue Jack	1	53	0-81	Hub Cap, 1.958 Dia.	2		RHWW	Weld on Wing Wheel Assembly	1
21	0-175	Hex Capscrew, 5/16" x 1", GR5	4	54	0-70	Decal, Caution Operating	2	85	OT302	Extension Tube	2
22	0-176	Lockwasher, 5/16"	6	55	0-180	Hex Capscrew, 3/8" -16 x 2 1/2", GR5	4	86	OV301	Vicon Head Kit, Includes #87, #88 & #89	
23	0-177	Hex Nut, 5/16"-18	6	56	0-304	Spring Mounting Plate	1	87	OV184	Hex Capscrew, 3/4" -10 x 5"	2
24	0-172	Hex Capscrew, 1/2"-13 x 1 1/2", GR5	8	57	0-63	Leaf Spring	1	88	OV185	Nylock Nut, 3/4" -10	2
25	0-173	Lockwasher, 1/2"	8	58	0-305L	Chain Mounting Bracket, LH	1	89	VHM	Vicon Head	2
26	0-153	Hex Nut, 1/2" -13	8		0-305R	Chain Mounting Bracket, RH	1	90	0-181	Hex Capscrew, 3/8" -16 x 1", GR5	1
27	0-156	Hex Capscrew, 5/8" -11 x 2", GR5	7	59	0-160	Hex Capscrew, 1/2 -13 x 3", GR5	2	91	MC117	SMV Bracket	1
28	FW58	Flatwasher, 5/8"	2	60	0-161	Nylock Nut, 1/2" -13	2	92	K-333	Carriage Bolt, 5/16" x 1 1/2"	2
29	0-174	Hex Nylock Nut, 5/8"	2	61	0-316	Reinforcing Plate	1	93	K-337	Mounting Bracket	1
30	0-155	Lockwasher, 5/8"	19	62	0-64B	Chain	2	94	K-322	Flatwasher, 1/2"	2
31	0-154	Hex Nut, 5/8" -11	19	63	0-65	HD Clevis	2		SRK	Slider Repair Kit	
32	0-67	U-Bolt, 5/8" x 4 x 5 1/2"	7	64	0-163	Hex Capscrew, 1" - 8 x 6", GR5	2		HS	Hub & Spindle Complete	
33	0-168	Hex Capscrew, 3/4" -10 x 3 1/2", GR5	2	65	0-164	Nylock Nut, 1" - 8	2		0-83	Hub Assembly (Less Spindle)	

Optional Center Wheel Kit



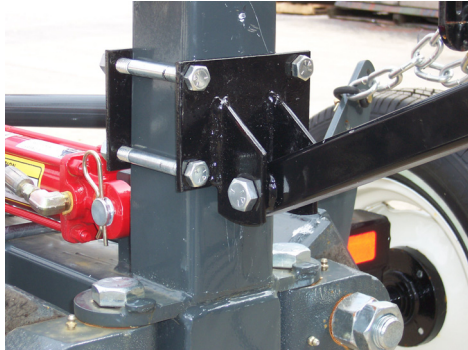
Item	Part No.	Description	Qty.
1	OC-316	Cyl. Pin Attachment Plate	1
2	OC-65	Chain Clevis	1
3	OC-105	Wire Rope Thimble, 1/8"	2
4	OC-106	Wire Rope Clamp, 1/8"	2
5	OC-317	Cable Riser	1
6	OC-107	Cable Roller, 1/8"	1
7	OC-180	Hex Capscrew, 5/16" x 2"	1
8	OC-176	Lockwasher, 5/16"	1
9	OC-177	Hex Nut, 5/16"	1
10	OC-108	Wire cable, 3/16" x 60"	1

Item	Part No.	Description	Qty.
11	OC-318	Mounting Back Plate	1
12	OC-319	Mounting Bracket	1
13	OC-181	Hex Capscrew, 1/2" x 4 1/2"	4
14	OC-173	Lockwasher, 1/2"	4
15	OC-153	Hex Nut, 1/2"	4
16	OC-182	Hex Capscrew, 5/8" x 4"	1
17	OC-76	Nylock Nut, 5/8"	1
18	OC-321	Spindle Arm	1
19	O-178	Setscrew, 1/2" x 1 1/2"	1
20	O-179	Jam Nut, 1/2"	1

Center Wheel Kit Installation

Install Center Wheel Kit on the rear of the AGC Rake Caddy as follows.

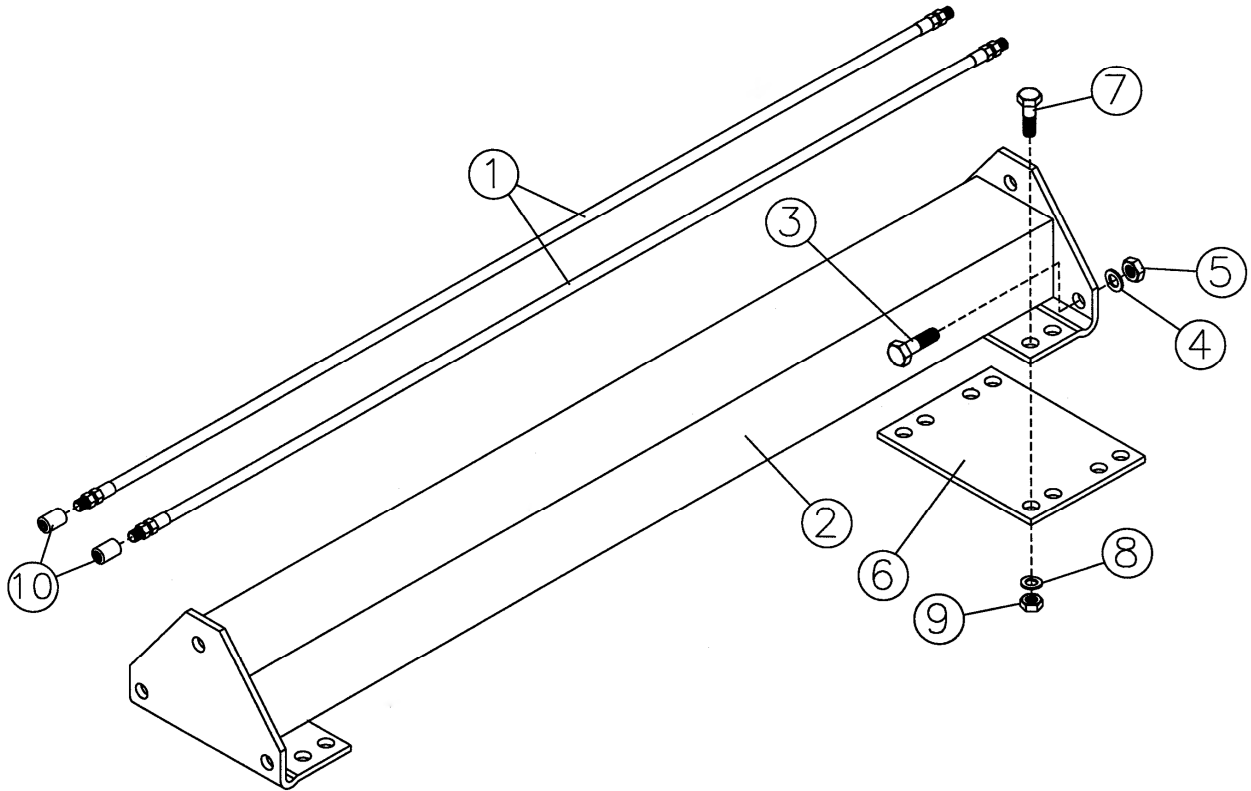
1. The Rake Caddy should be in the transport position with the Transport Lock Pins in place. Remove the Leaf Spring Mounting Plate by removing the 4 capscrews, lockwashers and nuts. Install the Cable Riser and Roller Assembly, item #5, in place of the Leaf Spring Mount Plate using the 4 capscrews, lockwashers and nuts.
2. Install the Mounting Bracket and Back Plate, item #12 and #11, onto the channel using the capscrews, lockwashers and nuts supplied. The Mounting Bracket should be positioned as low as possible with the Mounting Ears for the Spindle facing downward. See picture below.



It may be necessary to reverse the Spindle Arm on the Mounting Bracket depending on if a RH or LH Rake Wheel is being used.

3. Release the hydraulic pressure from the cylinder and hoses. Remove the front Hydraulic Cylinder Pin and install the Cylinder Pin Attachment Plate with the Chain Clevis and Cable attached as shown in the picture above.
4. Run the Cable over the Roller and attach to the Spindle Arm with the Arm in the level position.
5. Install the Hub and Spindle and Rake Wheel.
6. Open and close the Rake Caddy to be sure the Center Wheel raises completely off the ground for transport and lowers to the ground in the working position. It may be necessary to readjust the cable length.





AGC Rake Caddy 4' Tongue Extension Kit

Item	Part No.	Description	Qty.
1	OE-58	Hydraulic Hose Assembly, 1/4" - 1/2" NPT Male 4'	2
2	OE-301	Pull Tongue Extension	1
3	OE-156	Hex Capscrew, 5/8"-11 x 2", GR5	3
4	OE-155	Lockwasher, 5/8"	3
5	OE-154	Hex Nut, 5/8"-11	3
6	OE-319	Reinforcing Plate	1
7	OE-172	Hex Capscrew, 1/2"-13 x 1 1/12", GR5	8
8	OE-173	Lockwasher, 1/2"	8
9	OE-153	Hex Nut, 1/2"-13	8
10	OE-302	Pipe Coupler, 1/2" Female	2

Ogden Metalworks, Inc. will warrant for a period of twelve months, one year, from the date of purchase by the original buyer, their AGC Wheel Rake Caddy, providing the conditions of this warranty have been met. 1) The warranty card is completed and returned to Ogden Metalworks, Inc. within 30 days of the purchase of the Rake Caddy. 2) The Hay Rake Caddy has not been altered, tampered with or has been subject to misuse, negligence or accident. 3) The Hay Rake Caddy is returned to the dealer or factory prepaid for all warranty work and will be returned to the original buyer freight collect.

Further, hydraulic cylinders, hoses, spindles, hubs, rims and tires are covered under the warranty of their manufacturer. Ogden Metalworks, Inc. will replace or exchange any part which is determined to be defective due to factory workmanship or material. We reserve the right to inspect all warranty claims.

Ogden Metalworks, Inc. guarantees that all warranty claims will be handled with promptness, courtesy and fairness to the customer.

Ogden Metalworks, Inc.
PO Box 128 - 301 N. Marilyn Ave.
Ogden, IL 61859
217-582-2552 – Fax 217-582-2746
www.ogdenmetalworks.com
www.ogdenmetalworks@ogdenmetalworks.com

Owner's record:

Date of purchase _____ Serial No. _____ Model No. _____

Dealers name and address _____

AGC Warranty Card

Please Print **Date Purchased** _____

Name _____

Address _____

Serial No. _____ **AGC Model 8 10 12**

Dealer _____

Address _____

Warranty will not be valid unless this card is returned

