



OGDEN

Model BCH610 MOWER CARRIER

Instruction Manual and Parts List

Use this Manual for Safety Instructions and Operating Instructions.
Make sure everyone who operates this machine has read the manual completely.
Save for future reference.

IMPORTANT: The Mower Carrier is designed to operate with Disc Mowers up to 10 ½' in size. In order to insure safe operation it may be necessary to install the optional Weight Box for additional counter balance.

WARNING: DO NOT DISCONNECT MOWER CARRIER FROM TRACTOR UNLESS MOWER CUTTERBAR IS LOWERED TO THE GROUND

Ogden Metalworks Inc.

301 N. Marilyn Ave.

PO Box 128

Ogden, IL 61859

217-582-2552

Fax 217-582-2746

email: ogdenmetalworks@ogdenmetalworks.com

www.ogdenmetalworks.com

Mower Carrier

Table of Contents

Page 2	Introduction
Page 3	Safety
Page 4	Decals
Page 5	Assembly Instructions
Page 8	Attaching Mower
Page 9	Operation
Page 10	Transport
Page 11	Maintenance
Page 12	Mower Carrier Parts List
Page 15	Warranty Card

Introduction

It is important that you thoroughly understand the operation of the Mower Carrier before use. Read through this manual completely, watching especially for safety symbols (see illustration below). This safety alert symbol is used throughout this manual to identify possible safety hazards.



It is the user's responsibility to read the operator's manual and comply with all the instructions pertaining to operation and maintenance. It is also the user's responsibility to inspect the machine at regular intervals and repair or replace worn or damaged parts when continued use would cause damage or excessive wear to other parts.

The manufacturer reserves the right to make improvements, discontinue or change specifications, models or design without notice and without incurring obligation.

When ordering parts for your Mower Carrier, please specify the part number and the part description as shown in the parts listing in this manual. Please give the serial number of the Disc Mower Carrier in all correspondence when referring to the Disc Mower Carrier. Record the serial number and purchase date here for future use.

Serial Number _____

Model _____ **Purchase date** _____

IMPORTANT: When this machine is traded or sold, make sure this manual accompanies the machine so future operators will have complete operating instructions and safety warnings available to them.



Safety Instructions



CAUTION: This machine should never be operated by anyone who is not familiar with the product and has not read the instruction manual. Do not allow children to operate the Mower Carrier.

All persons operating this machine should read and understand the Instruction Manual.

Disengage PTO, apply parking brake and stop tractor engine before dismounting tractor.

Read and understand all safety decals located on the machine.

Keep hands, feet and clothing away from moving parts.

Keep Safety Decals clean and legible at all times.

Never transport faster than surface conditions allow.

Replace Safety Decals that are missing or become illegible.

Display the SMV Emblem when transporting with a tractor.

Do not allow anyone to ride on the machine.

Make sure you are in compliance with all local regulations regarding transporting agriculture equipment on public roads and highways. Consult your local law enforcement agency for further details.

Be sure machine is attached securely to the tractor before operating or transporting.

Inspect the Mower Carrier daily. Lubricate and repair or replace parts as needed.

Ensure that the Slow Moving Emblem (SMV) and all reflectors and lights required by the local highway and transport authorities are in place and are clean and visible by overtaking and oncoming traffic.

Maintain and keep all Safety Shields in place.

Be sure the Drivelines are properly connected and that any quick disconnects are locked before operation.

Before operating the machine inspect for loose or damaged bolts or parts and make necessary repairs before starting.

All bystanders should be a safe distance from the machine when in operation.

Do not disconnect Disc Mower Carrier from tractor unless cutterbar is lowered all the way to the ground.

High-pressure oil leaks can penetrate skin causing serious injury. Do not use your finger or other skin to check for leaks.

Decals


Important: Many of the following Decals are located on your Disc Mower Carrier. Before you operate the Disc Mower Carrier, read and understand the purpose for each Decal. Replace any damaged Decals. Keep all Decals clear and readable.

 **WARNING**

1. READ OPERATOR'S MANUAL AND LEARN TO OPERATE THIS MACHINE SAFELY.
2. KEEP PEOPLE CLEAR WHEN OPERATING.
3. DO NOT ALLOW RIDERS.
4. BEFORE LEAVING OPERATOR'S POSITION TO ADJUST, LUBRICATE, CLEAN, OR UNCLOG THE MACHINE, STOP ENGINE AND SET BRAKE.
5. WAIT FOR ALL MOVEMENT TO STOP BEFORE SERVICING THE MACHINE.
6. INSTALL AND SECURE ALL GUARDS BEFORE OPERATING.
7. KEEP HANDS, FEET AND CLOTHING AWAY FROM MOVING PARTS.
8. DO NOT EXCEED A SAFE TRANSPORT SPEED.

 **WARNING**

- TO AVOID INJURY •
- OPERATE ONLY WITH 540 RPM PTO
- KEEP ALL SHIELDS IN PLACE AND IN GOOD CONDITION

 **WARNING**

To operate safely it is necessary to maintain the proper counter balance. If more weight is needed, contact the selling dealer or Ogden Metalworks, Inc. to obtain a Weight Box or Weight Rack. Do not use this Carrier with a Disc Mower exceeding 10½' in width.

 **WARNING**

DO NOT DISCONNECT MOWER CARRIER FROM TRACTOR UNLESS CUTTER BAR IS LOWERED TO THE GROUND

 **CAUTION**

STAY CLEAR OF CART WHEN RAISING, LOWERING AND OPERATING

 **CAUTION**

HIGH PRESSURE OIL LEAKS CAN PENETRATE SKIN CAUSING SERIOUS INJURY AND GANGRENE. SEE OPERATOR'S MANUAL & CONSULT A PHYSICIAN IMMEDIATELY. DO NOT USE FINGER OR OTHER SKIN TO CHECK FOR LEAKS. LOWER LOAD, RELEASE PRESSURE & BE SURE OIL IS COOL BEFORE LOOSENING FITTING.

BCH610 Mower Carrier Assembly Instructions



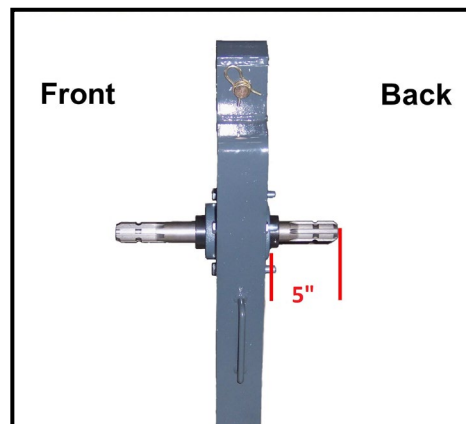
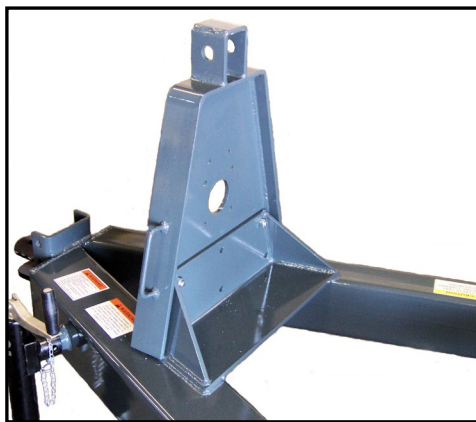
CAUTION: Wear proper protective equipment such as Safety Glasses and protective shoes when assembling.

Lay out all parts so location and verification will be easier. Make sure all parts were received before proceeding with the assembly.

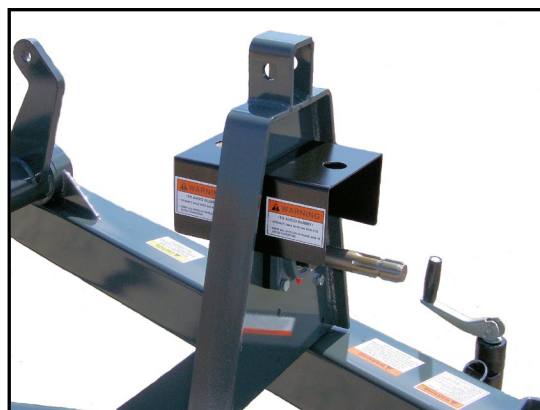
Install the two Tire and Wheel Assemblies onto the Hub Assemblies and properly tighten Lug Bolts or Lug Nuts.

Attach the Tongue Jack to the Main Frame Weldment and secure in place with the Locking Pin.

Attach the Driveshaft Support Weldment to the Main Frame using six 1/2" x 1 1/2" Cap screws, Lockwashers and Hex Nuts. If the Spline Shaft and Flange Bearings are not installed in the Driveshaft Support, do so at this time using four 1/2" x 4 1/2" Hex Cap screws, Lockwashers and Hex Nuts. Mount the Flange Bearings with the Grease Zerks toward the bottom. Install the Spline Shaft with 5" of shaft between the bearing flange and the end of the shaft protruding on the backside. After inserting the Spline Shaft into the Flange Bearings, be sure to lock the eccentric lock collars on both Flange Bearings. Standing at the rear of the Mower Carrier and facing forward, lock both collars in a clockwise direction and tighten the setcrews.

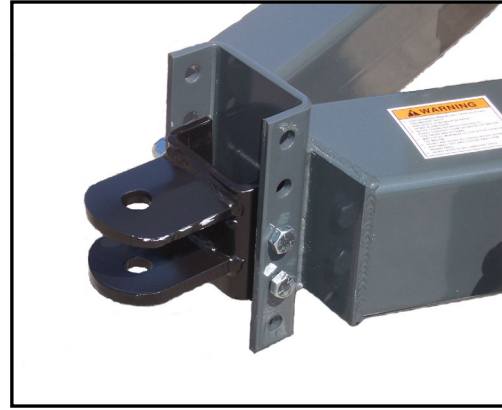
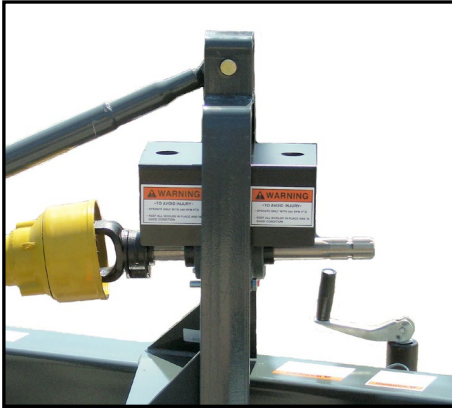


Install the two Driveline Shields using eight 3/8" x 1" Hex Cap screws, Lockwashers and Hex Nuts.



6

Attach the Top Link using Pin and Hairpin.



Attach the Tongue Clevis using two 5/8" x 6" Capscrews and Nylock Nuts.



WARNING: Always wear protective eye goggles and use a magnifying Glass or hold a piece of wood on suspected leaks. Pinhole hydraulic leaks can penetrate skin. Do not touch.



CAUTION: Make sure a restrictor is installed in one of the hydraulic lines. Failure to use a restrictor will allow the machine to raise and lower rapidly and could result in damage to the machine and injury to bystanders.



CAUTION: Operate the cylinder through the cycle a few times to expel air from the system. Failure to fully charge the hydraulic system could result in injury when the mower falls abruptly.

Mount the Hydraulic Cylinder on the Carrier and install two 1/2" NPT Male x 3/8" JIC Male Elbows in the Hydraulic Cylinder. *Note:* Do not use Teflon tape, only use liquid type thread sealant. Attach the 114" Hose with 1/2" NPT Male - 3/8" JIC Swivel ends to the front port of the Hydraulic Cylinder. Attach the 122" Hose with 1/2" NPT Male - 3/8" JIC Swivel ends to the rear port of the Hydraulic Cylinder. Install the Restrictor on one of the Hydraulic Hoses before installing a Hydraulic Coupler. Route the Hydraulic Hoses through the loop on the side of Drive Shaft Support Weldment and then to the tractor. Before attaching a Mower to the Mower Carrier operate the Hydraulic Cylinder several times to purge the air out of the system to prevent any sudden drop.





CAUTION: The Mower Carrier is designed to operate with Disc Mowers up to 10' 6" in size. However in order to insure safe operation it may be necessary to install the optional Weight Box for additional counter balance.

Tractor Drawbar and Adjustable Clevis Hitch

Before attaching the Mower Carrier to a Tractor, it is very important to adjust the Tractor Drawbar and Clevis Hitch on the Mower Carrier. The Mower Carrier is designed to operate with a 540-RPM PTO Drive. The Tractor Drawbar must be set at the standard distance for 540-RPM PTO Drives which is 14 inches from the end of the PTO Shaft on the Tractor to the Hitch Pin hole. The Tractor Drawbar can be adjusted to obtain this measurement. The Clevis Hitch on the Mower Carrier is designed to provide four different height positions. Select the proper position to keep the Main Frame and Mower Carrier parallel with the ground. After the Tractor Drawbar and the Mower Carrier Clevis Hitch are properly adjusted, the Tractor and Mower Carrier can be hitched together.



WARNING: Do not disconnect Mower Carrier from Tractor unless Cutterbar is lowered to the ground.

Driveline

When attaching a Mower to the Mower Carrier, the original Mower Driveline will be used between the Tractor and the input on the Mower Carrier. Due to variations in the length of PTO Drivelines it may be necessary to shorten the Mower Driveline to fit between the Mower and the input on the Mower Carrier. Consult your Mower's Operating Manual for proper cutting procedure. Be sure to allow a 1" safety margin at the Driveline's closest collapsed length. Do not shorten more than necessary. The Driveline halves should have an overlap of 4" to 6" after shortening. The PTO Driveline that was furnished with the Mower Carrier will connect from the Mower Carrier to the Mower.



CAUTION: PTO Drivelines must not bottom out or Damage will occur.



CAUTION: Grease Drivelines Daily. Failure to do so may cause severe damage.

8



CAUTION: When attaching the PTO Driveline make sure the yoke is properly locked on the shaft.

Always have the Mower in the working position when attaching to the Mower Carrier and always have the Mower Carrier attached to a Tractor.

Attach the Mower to the lift arms on the Mower Carrier. Be sure to install and tighten the 3/4" x 6 1/2" Hex Capscrew and 3/4" Nylock Nut.

Attach the Top Link between the Mower and Mower Carrier. To adjust the Mower angle, screw the Top Link in or out. Consult the Mower Operator's Manual for the most efficient angle.

Lengthen any Mower Locking Mechanism cords so they reach the tractor cab.

Before Operating

Attach the Mower PTO Driveline between the Tractor and Mower Carrier.

Attach the PTO Driveline that came with the Mower Carrier between the Mower Carrier and the Mower.



CAUTION: When attaching the PTO Driveline make sure that the Yoke is properly locked on the shaft.



WARNING: Operate only with 540 RPM PTO

Connect the Hydraulic Hoses for the Mower Carrier to the Tractor.

Connect the Hydraulic Hose for the Mower to the tractor.

Start the Tractor and engage the Hydraulics to check for proper operation.



CAUTION: Always attach the Mower Carrier to a Tractor before folding or unfolding the Cutter Bar. Failure to do so could result in damage to the implement and or possible personal injury.

Make sure all Bolts and Nuts are tight. Recheck after a few hours of operation.

Check Tires and inflate to proper pressure.

Grease Drivelines, Bearings and Grease Zerks on Pivot Assembly.

Optional Weight Box

To insure safe operation with heavy or larger Disc Mowers a bolt-on Weight Box is available to add counter balance. It may be necessary to install this Weight Box for additional counter balance when using a large or heavy Disc Mower.



CAUTION: Do not operate the Mower Carrier without sufficient counter balance to prevent a rollover.

Operation

Operating Instructions

The PTO Operating Speed for the Mower Carrier is 540 RPM. Do not over speed.

Many factors can determine the proper ground speed such as ground conditions, density, humidity and type of forage to be cut. Consult the Mower Operator's Manual for determining the proper ground speed.

Always operate the Mower Carrier in a safe manner.



DANGER: Never allow children to operate, ride on or come close to the Mower Carrier and Tractor while in operation.

10

Transport

Make sure you are in compliance with all local regulations regarding the transporting of agriculture equipment on public roads and highways. Consult your local law enforcement agency for further details.

Ensure that the Slow Moving Emblem (SMV) and all reflectors and lights required by the local highway and transport authorities are in place and are clean and visible by overtaking and oncoming traffic.

When transporting the Mower Carrier, with a Mower attached, be aware that on the right side of the Tractor the Mower may extend beyond the Tractor tires.

Make sure the Cutter Bar is locked and secured for transporting.



WARNING: Always use the Tractor Warning Lights, SMV Emblem and Reflectors for adequate warning to operators of other vehicles.

Maintenance

Grease all Drivelines, Bearings and Grease Zerks daily to ensure proper operation.

Periodically check all Bolts and Nuts for tightness.

Periodically check Tire pressure and inflate to recommended pressure.

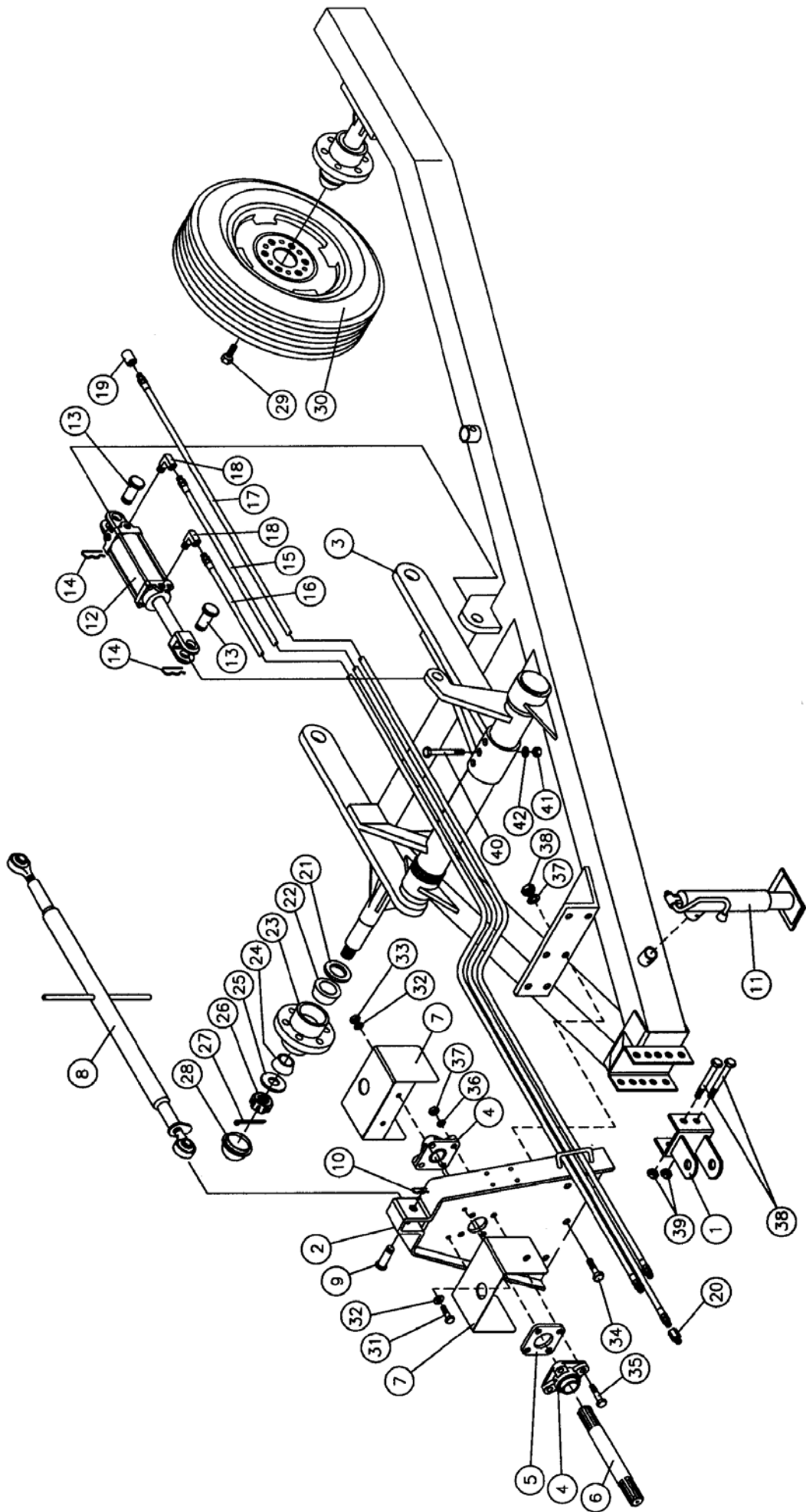
Check Hydraulic Hoses periodically for cracks, abrasions or leaks. Replace defective hose immediately.

Repack wheel bearings every six months.



Caution: Never make adjustments or perform maintenance while the Tractor is running. Allow all mechanisms to fully stop before cleaning, adjusting, or doing maintenance.

Notes



BCH610 Parts List

Item No.	Part No.	Description	Qty.
1	BCH102	Tongue Clevis	1
2	BCH107	Drive Shaft Support Weldment	1
3	BCH100	Main Frame Weldment	1
4	MC109	Flange Bearing, 1 3/8"	2
5	MC138	Bearing Spacer *See note below	1
6	MC108L	Spline Shaft	1
7	BCH111	Driveline Shield	2
8	BCH112	Top Link	1
9	K-202	Top Link Pin	1
10	K-232	Hairpin	1
11	0-51	Tongue Jack	1
12	662234	Hydraulic Cylinder, 3" x 6"	1
13	MC133	Cylinder Pin	2
14	MC134	Clip Pin	2
15	BCH144	Hydraulic Hose, 1/2" MB, 122"	1
16	BCH145	Hydraulic Hose, 1/2"MB x 3/8" JIC, 114"	1
17	BCH143	Hydraulic Hose, 1/2" MB x 3/8" JIC, 122"	1
18	6MJ-8MB90	Elbow	2
19	4000-15	Female quick coupler, O-ring	1
20	FR12ORB062	Flow Restrictor, 1/2" O-ring, 1/32"	1
21	MC124	Grease Seal	1
22	MC125	Inner Bearing	2
23	MC126	Wheel Hub	2
24	MC127	Outer Bearing	2
25	MC128	Flatwasher	2
26	MC129	Castle Nut	2
27	MC130	Cotter Pin	2
28	MC131	Hub Cap	2
29	MC135	Lug Bolt	12
30	MC103	Tire & Wheel Assembly	2
31	0-157	Hex Capscrew, 3/8" x 1 1/2" GR5	2
32	MCH38F	Flatwasher, 3/8"	4
33	NL38	Nylock Nut, 3/8"	2
34	0-172	Hex Capscrew, 1/2" x 1 1/2" GR5	6
35	H12-412	Hex Capscrew, 1/2" x 4 1/2" GR5	4
36	0-173	Lockwasher, 1/2"	10
37	0-153	Hex Nut, 1/2"	10
38	BCH587	Hex Capscrew, 5/8" x 7" GR5	2
39	MCH580	Nylock Nut, 5/8"	2
40	BCH3465	Hex Capscrew, 3/4" x 6 1/2" GR8	1
41	0-170	Hex Nut, 3/4"	1
42	K-324	Lockwasher, 3/4"	1
Not shown	MC110	Drive Shaft	1

*After serial #8004 Bearing Spacer was welded to Drive Shaft Support Weldment

Notes



Warranty Policy

Ogden Metalworks, Inc. warrants this product to be free from defects in material and or workmanship under normal use and service, when set up and operated as intended and under normal service and conditions and in accordance with the instruction manual, for one year from the date of delivery by the dealer to the original purchaser. Ogden Metalworks, Inc.'s obligation under this warranty is limited to the replacement of any part or parts which are determined defective by Ogden Metalworks, Inc. due to factory workmanship and or material. This warranty does not cover common wear items. Credit for required labor will be issued at the company's discretion.

This warranty is void on any unit which has been modified or which has been subject to misuse, negligence or accident. Ogden Metalworks, Inc., reserves the right to request the return of any part in question to be sent to the factory for inspection. All returned parts must be sent to the factory freight prepaid.

This warranty is extended solely to the original purchaser and is not transferable. This warranty is not valid unless the warranty card has been returned to Ogden Metalworks, Inc. within 30 days from the date of purchase by the end user.

Ogden Metalworks, Inc.

Ogden Metalworks, Inc. reserves the right to change specifications and dimensions without notice.

WARRANTY CARD Ogden BCH610 Mower Carrier

Please Print

Date Purchased _____

Name _____ **Phone #** _____

Address _____

Serial No. _____ **Model No.** _____

Dealer Purchased From: _____

Address _____

