

# Soil Pulverizer

**Model 512 & 612**

## **Instruction Manual and Parts List**

**Use this manual for safety instructions and operating instructions.  
Make sure that everyone who operates this machine has read this manual completely!  
Save for future use.**



# OGDEN

**Metalworks, Inc.**  
301 N. Marilyn Avenue – PO Box 128  
Ogden, IL 61859  
217-582-2552 – Fax 217-582-2746  
[www.ogdenmetalworks.com](http://www.ogdenmetalworks.com)

## Table of Contents

|                                 |           |
|---------------------------------|-----------|
| <b>Introduction.....</b>        | <b>2</b>  |
| <b>Safety Instructions.....</b> | <b>3</b>  |
| <b>Decals.....</b>              | <b>4</b>  |
| <b>Specifications.....</b>      | <b>5</b>  |
| <b>Operation.....</b>           | <b>6</b>  |
| <b>Parts List.....</b>          | <b>8</b>  |
| <b>Warranty.....</b>            | <b>11</b> |

## **Introduction**

It is important that you thoroughly understand the operation of the Soil Pulverizer before use. Read through this manual completely, watching especially for safety symbols (see illustration below). This safety alert symbol is used throughout this manual to identify possible safety hazards.



It is the user's responsibility to read the operator's manual and comply with all the instructions pertaining to operation and maintenance. It is also the user's responsibility to inspect the machine at regular intervals and repair or replace worn or damaged parts when continued use would cause damage or excessive wear to other parts.

The manufacturer reserves the right to make improvements, discontinue or change specifications, models or design without notice and without incurring obligation.

When ordering parts for your Soil Pulverizer, please specify the part number and the part description as shown in the parts listing in this manual. Please give the serial number of the Soil Pulverizer in all correspondence when referring to the Soil Pulverizer. Record the serial number and purchase date here for future use.

**Serial Number** \_\_\_\_\_

**Model** \_\_\_\_\_ **Purchase date** \_\_\_\_\_

**IMPORTANT:** When this machine is traded or sold, make sure this manual accompanies the machine so future operators will have complete operating instructions and safety warnings available to them.



## **Safety Instructions**



**CAUTION:** This machine should never be operated by anyone who is not familiar with the product and has not read the instruction manual.

All persons operating this machine should read and understand the Instruction Manual.

Read and understand all safety decals located on the machine.

Keep Safety Decals clean and legible at all times.

Replace Safety Decals that are missing or become illegible.

Do not allow anyone to ride on the power unit or equipment.

All bystanders should be a safe distance from the machine when in operation.

Be sure machine is attached securely to the tractor before operating or transporting.

Inspect the machine daily. Lubricate and repair or replace parts as needed.

Maintain and keep all Safety Shields in place.

Before operating the machine inspect for loose or damaged bolts or parts and make necessary repairs before starting.

Do not operate or transport on steep slopes.

Do not operate or transport equipment while under the influence of drugs or alcohol.

Never go underneath equipment unless it is properly blocked or secured.

Add weight to the front of the tractor as needed to maintain safe steering traction.

Lower attachment to the ground, apply parking brake and stop tractor engine before dismounting tractor.

Never perform service or maintenance with engine running.

Keep hands, feet and clothing away from moving parts.

Never transport faster than surface conditions allow.

Display the SMV Emblem when transporting with a tractor.

Make sure you are in compliance with all local regulations regarding transporting agriculture equipment on public roads and highways. Consult your local law enforcement agency for further details.

Ensure that the Slow Moving Emblem (SMV) and all reflectors and lights required by the local highway and transport authorities are in place and are clean and visible by overtaking and oncoming traffic.

Power unit must be equipped with ROPS or ROPS cab and seat belt. Keep seat belt securely fastened.

Always sit in the tractor seat when operating controls or starting engine.

Know and understand your controls and how to stop engine and attachment quickly.

Store implements in an area children normally do not play.

## Decals

**Important:** Many of the following Decals are located on your Soil Pulverizer. Before you operate the Soil Pulverizer, read and understand the purpose for each Decal. Replace any damaged Decals. Keep all Decals clear and readable.

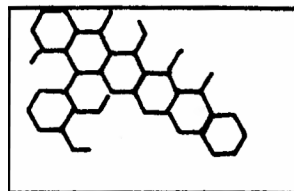
1.



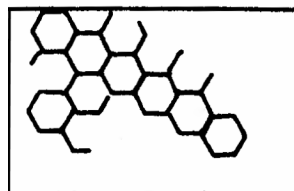
### WARNING

1. READ OPERATOR'S MANUAL AND LEARN TO OPERATE THIS MACHINE SAFELY.
2. KEEP PEOPLE CLEAR WHEN OPERATING.
3. DO NOT ALLOW RIDERS.
4. BEFORE LEAVING OPERATOR'S POSITION TO ADJUST, LUBRICATE, CLEAN, OR UNCLOG THE MACHINE, STOP ENGINE AND SET BRAKE.
5. WAIT FOR ALL MOVEMENT TO STOP BEFORE SERVICING THE MACHINE.
6. INSTALL AND SECURE ALL GUARDS BEFORE OPERATING.
7. KEEP HANDS, FEET AND CLOTHING AWAY FROM MOVING PARTS.
8. DO NOT EXCEED A SAFE TRANSPORT SPEED.


2.



3.




4.



### WARNING

- Tractor's rearing up may cause machine damage, injury, or death.
- Never use tractor without ROPS.
- Keep seatbelt fastened snugly to prevent falling off and injury. NO RIDERS.



---

- Add tractor front weight as needed to maintain safe steering traction.
- Slow down in curves and rough places.
- Stay away from soft banks and holes.

- Never start or accelerate suddenly to maintain safe steering traction.
- Do not lift heavy implement while going up steep slopes.

| Item No. | Part No. | Description                  | Qty. |
|----------|----------|------------------------------|------|
| 1        | 51132    | Decal, Warning Operating     | 1    |
| 2        | B489A    | Decal, Amber Reflector       | 2    |
| 3        | 0-71     | Decal, Red Reflector         | 2    |
| 4        | P120     | Decal, Warning, Front Weight | 1    |

# Specifications

5

| <b>Model</b>                                    | <b>512</b>             | <b>612</b>             |
|---|------------------------|------------------------|
| <b>Working Width</b>                            | 60"                    | 72"                    |
| <b>Overall Width</b>                            | 63 1/2"                | 75 1/2"                |
| <b>Weight</b>                                   | 910 lbs.               | 1093 lbs.              |
| <b>Required HP (Max.)</b>                       | 50                     | 70                     |
| <b>Number of Spikes or Shanks</b>               | 15 Front - 15 Back     | 18 Front - 18 Back     |
| <b>Spikes</b>                                   | 5/8" x 8 1/2"          | 5/8" x 8 1/2"          |
| <b>Scarifier Shanks</b>                         | 1/2" x 2" x 10"        | 1/2" x 2" x 10"        |
| <b>Packerizer Roller diameter</b>               | 9 1/2"                 | 9 1/2"                 |
| <b>Roller Shaft diameter</b>                    | 1 3/4"                 | 1 3/4"                 |
| <b>Bearings</b>                                 | 1 3/4" self-aligning   | 1 3/4" self-aligning   |
| <b>Height</b>                                   | 36"                    | 36"                    |
| <b>Front to back length</b>                     | 33"                    | 33"                    |
| <b>Spike or Shank spacing</b>                   | 2"                     | 2"                     |
| <b>H Beam</b>                                   | 12" x 12", 65 lbs./ft. | 12" x 12", 65 lbs./ft. |
| <b>A Frame</b>                                  | 3/8" Formed Plate      | 3/8" Formed Plate      |
| <b>Hitch</b>                                    | Cat I                  | Cat I                  |
| Specifications subject to change without notice |                        |                        |

## **Operation**

**WARNING!**



Tractor must be equipped with ROPS or ROPS cab and seat belt. Keep seat belt securely fastened.

**WARNING!**



Never allow children or untrained persons to operate equipment.

### **Pre-operation check list**

Make sure tractor ROPS or ROPS cab and seat belt are in good condition.

Check that equipment is properly and securely attached to the power unit.

Check that all hardware is properly installed and secured.

Review all safety rules and safety decal instructions.

Check all lubrication points and lubricate as needed.

Check that tractor has sufficient front end weight for safe operation.

### **Attaching Soil Pulverizer to tractor**

Position the Soil Pulverizer behind the tractor on a level dry area. Attach the lower 3 point lift arms of tractor to the Soil Pulverizer lift pins. Secure with lynch pins. Attach tractor top link to Soil Pulverizer using the pin provided. Initial adjustment of the top link must be made on level ground. Lower Soil Pulverizer to the ground and extend or retract the top link to level Soil Pulverizer. Raise and lower the Soil Pulverizer through the tractors full lift range making sure the Soil Pulverizer does not come in contact with any tractor component.

### **Adjusting the Top Link**

The Soil Pulverizer should be adjusted in the level position under normal conditions. However the unit may have to be pitched forward or rearward depending on soil conditions and the job being done. It may be necessary to experiment to determine the best setting.

## **General Operating Instructions**

Before using the Soil Pulverizer on any job first remove any large sticks, limbs, tree stumps, rocks, concrete or debris from the area. Do not attempt to tear up tree stumps, concrete, black top, asphalt or large rocks with the Soil Pulverizer.

Controlling and maintaining the Soil Pulverizer operating depth can be accomplished by using either the constant draft control or implement position control stops. It is usually better to use the implement position control during the initial portion of the job. Switching to the control draft will speed up the work when the grade finish becomes more established. In order to determine which setting is best for your present operation it may be necessary to experiment with both settings.

The scarifying and pulverizing action will begin as soon as the Soil Pulverizer touches the ground and is moving. Operate at a maximum ground speed of 5 mph. Do not turn with the unit in the ground. Damage to the Soil Pulverizer could occur.

When excessive debris or hard conditions exist, pitch the Soil Pulverizer forward to optimize performance. This can be accomplished by adjusting the top link.

If soil is building up on the rear roller, operations should be discontinued until the ground has dried. More than one pass may be necessary on any job to achieve the desired finish.

The Spike Teeth can be raised or lowered by loosening the u-bolt and moving the teeth. Be sure to retighten the u-bolt. Do not lower the Spike Teeth more than 4 ½" below the H Beam. The optimum operating position depends on the soil condition and the type of finish desired.

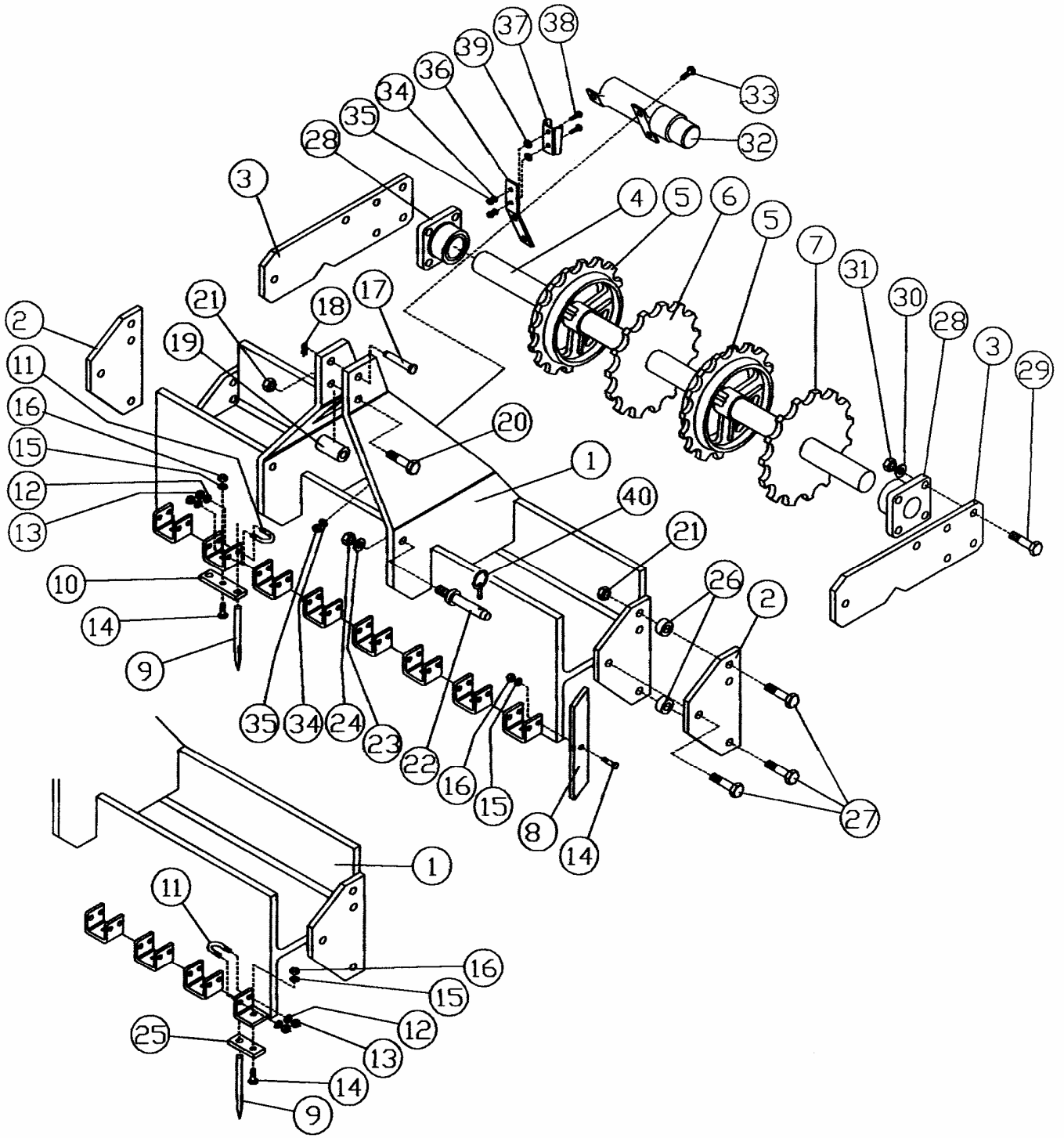
The Scarifying Shanks are not adjustable but should be reversed when wear results in reduced scarifying action. Remove the capscrew, lockwasher and nut. Flip over the Shank. and install with the point towards the front or tractor. Replace the capscrew, lockwasher and nut and secure.

## **Maintenance**

After the first hour of operation check to see that all hardware is secure and tighten if necessary.

After each use inspect the unit and replace any worn or damaged parts as well as any decals that are missing or not readable.

Lubricate the Rear Roller bearings every 10 hours with multipurpose grease.



# Soil Pulverizer Parts List

| Item | Part No. | Description                           | P512 | SS512 | P612 | SS612 |
|------|----------|---------------------------------------|------|-------|------|-------|
| 1    | P100     | Hitch & H Beam Weldment, 60"          | 1    | 1     |      |       |
|      | P101     | Hitch & H Beam Weldment, 72"          |      |       | 1    | 1     |
| 2    | P102     | Roller Arm Attaching Plate            | 2    | 2     | 2    | 2     |
| 3    | P103     | Roller Arm                            | 2    | 2     | 2    | 2     |
| 4    | P108     | Packer Roller Shaft, 1 3/4" x 60 3/4" | 1    | 1     |      |       |
|      | P109     | Packer Roller Shaft, 1 3/4" x 72 3/4" |      |       | 1    | 1     |
| 5    | P105     | Packer Wheel, 9 1/2"                  | 21   | 21    | 26   | 26    |
| 6    | P106     | Packer Wheel Spacer, 3/8"             | 23   | 23    | 22   | 22    |
| 7    | P107     | Packer Wheel Spacer, 1/4"             |      |       | 5    | 5     |
| 8    | P115     | Scarifier Shank, 1/2" x 2" x 12"      |      | 30    |      | 36    |
| 9    | P111     | Spike, 8 1/2"                         | 30   |       | 36   |       |
| 10   | P113     | Alignment Plate, 3 Hole               | 14   |       | 18   |       |
| 11   | P112     | V Bolt, 3/8" x 2 1/2"                 | 30   |       | 36   |       |
| 12   | 0-158    | Lockwasher, 3/8"                      | 60   |       | 72   |       |
| 13   | 0-159    | Hex Nut, 3/8"                         | 60   |       | 72   |       |
| 14   | K-303    | Capscrew, 1/2" x 1 1/2" GR5           | 16   | 30    | 18   | 36    |
| 15   | 0-173    | Lockwasher, 1/2"                      | 16   | 30    | 18   | 36    |
| 16   | 0-153    | Hex Nut, 1/2"                         | 16   | 30    | 18   | 36    |
| 17   | P116     | Top Link Pin                          | 1    | 1     | 1    | 1     |
| 18   | K-232    | Hairpin                               | 1    | 1     | 1    | 1     |
| 19   | P117     | Bushing                               | 1    | 1     | 1    | 1     |
| 20   | K-318    | Capscrew, 3/4" x 4" GR5               | 1    | 1     | 1    | 1     |
| 21   | K-320    | Hex Nylock Nut, 3/4"                  | 7    | 7     | 7    | 7     |
| 22   | K-203    | Hitch Pin, Cat I                      | 2    | 2     | 2    | 2     |
| 23   | K-227    | Lockwasher, 7/8"                      | 2    | 2     | 2    | 2     |
| 24   | K-228    | Hex Nut, 7/8"                         | 2    | 2     | 2    | 2     |
| 25   | P114     | Alignment Plate, 2 Hole               | 2    |       |      |       |
| 26   | P104     | Spacer, 1/2"                          | 4    | 4     | 4    | 4     |
| 27   | MCH3425  | Capscrew, 3/4" x 2 1/2" GR5           | 6    | 6     | 6    | 6     |
| 28   | P110     | Flange Bearing, 1 3/4" UCF209-28      | 2    | 2     | 2    | 2     |
| 29   | 0-156    | Capscrew, 5/8" x 2" GR5               | 8    | 8     | 8    | 8     |
| 30   | 0-155    | Lockwasher, 5/8"                      | 8    | 8     | 8    | 8     |
| 31   | 0-154    | Hex Nut, 5/8"                         | 8    | 8     | 8    | 8     |
| 32   | MH       | Manual Canister                       | 1    | 1     | 1    | 1     |
| 33   | 0-175    | Capscrew, 5/16" x 1" GR5              | 3    | 3     | 3    | 3     |
| 34   | 0-176    | Lockwasher, 5/16"                     | 3    | 3     | 3    | 3     |
| 35   | 0-177    | Hex Nut, 5/16"                        | 3    | 3     | 3    | 3     |
| 36   | P118     | Mounting Bracket                      | 1    | 1     | 1    | 1     |
| 37   | MC117    | SMV Bracket                           | 1    | 1     | 1    | 1     |
| 38   | K-333    | Carriage Bolt, 5/16" x 1 1/2"         | 2    | 2     | 2    | 2     |
| 39   | MCH38F   | Flatwasher, 3/8"                      | 2    | 2     | 2    | 2     |
| 40   | K-340    | Lynch Pin, 13/32" Dia.                | 2    | 2     | 2    | 2     |

Notes



**Warranty Policy**

Ogden Metalworks, Inc. warrants this product to be free from defects in material and or workmanship under normal use and service, when set up and operated as intended and under normal service and conditions and in accordance with the instruction manual, for one year from the date of delivery by the dealer to the original purchaser. Ogden Metalworks, Inc.'s obligation under this warranty is limited to the replacement of any part or parts which are determined defective by Ogden Metalworks, Inc. due to factory workmanship and or material. This warranty does not cover common wear items. Credit for required labor will be issued at the company's discretion.

This warranty is void on any unit which has been modified or which has been subject to misuse, negligence or accident. Ogden Metalworks, Inc., reserves the right to request the return of any part in question to be sent to the factory for inspection. All returned parts must be sent to the factory freight prepaid.

This warranty is extended solely to the original purchaser and is not transferable. This warranty is not valid unless the warranty card has been returned to Ogden Metalworks, Inc. within 30 days from the date of purchase by the end user.

Ogden Metalworks, Inc.

*Ogden Metalworks, Inc. reserves the right to change specifications and dimensions without notice.*

Warranty will not be valid unless card is returned

**Soil Pulverizer Warranty Card**

**Please print**                      **Purchased Date** \_\_\_\_\_

**Name** \_\_\_\_\_

**Address** \_\_\_\_\_

**Address** \_\_\_\_\_

**Serial Number** \_\_\_\_\_ **Model** \_\_\_\_\_

**Dealer** \_\_\_\_\_

**Address** \_\_\_\_\_