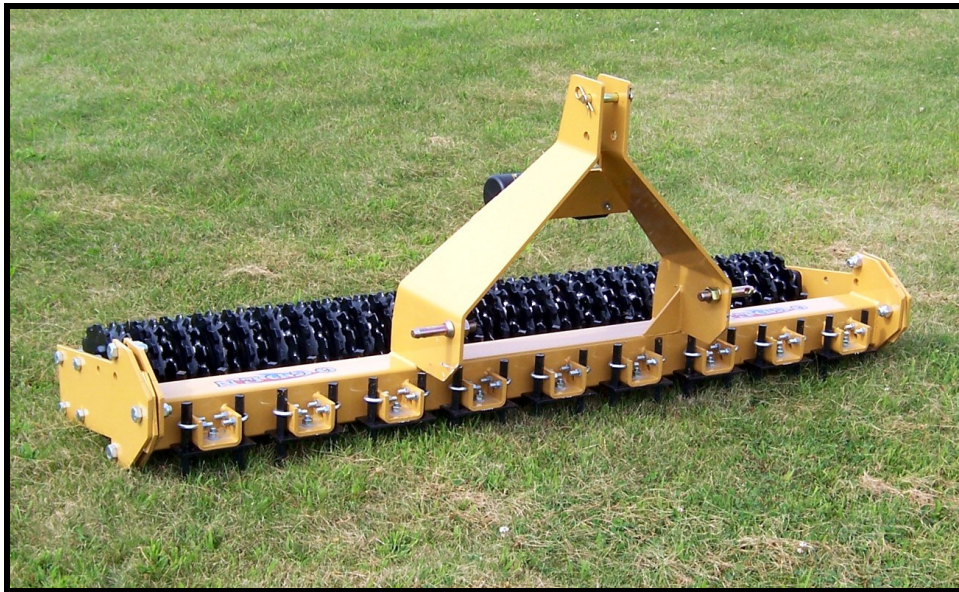


Utility Packer

Model UP5 & UP6

Instruction Manual and Parts List

**Use this manual for safety instructions and operating instructions.
Make sure that everyone who operates this machine has read this manual completely!
Save for future use.**



OGDEN

**Metalworks, Inc.
301 N. Marilyn Avenue – PO Box 128
Ogden, IL 61859
217-582-2552 – Fax 217-582-2746
www.ogdenmetalworks.com**

Introduction

It is important that you thoroughly understand the operation of the Utility Packer before use. Read through this manual completely, watching especially for safety symbols (see illustration below). This safety alert symbol is used throughout this manual to identify possible safety hazards.



It is the user's responsibility to read the operator's manual and comply with all the instructions pertaining to operation and maintenance. It is also the user's responsibility to inspect the machine at regular intervals and repair or replace worn or damaged parts when continued use would cause damage or excessive wear to other parts.

The manufacturer reserves the right to make improvements, discontinue or change specifications, models or design without notice and without incurring obligation.

When ordering parts for your Utility Packer, please specify the part number and the part description as shown in the parts listing in this manual. Please give the serial number of the Utility Packer in all correspondence when referring to the Utility Packer. Record the serial number and purchase date here for future use.

Serial Number _____

Model _____ **Purchase date** _____

IMPORTANT: When this machine is traded or sold, make sure this manual accompanies the machine so future operators will have complete operating instructions and safety warnings available to them.



Safety Instructions



CAUTION: This machine should never be operated by anyone who is not familiar with the product and has not read the instruction manual.

All persons operating this machine should read and understand the Instruction Manual.

Read and understand all safety decals located on the machine.

Keep Safety Decals clean and legible at all times.

Replace Safety Decals that are missing or become illegible.

Do not allow anyone to ride on the power unit or equipment.

All bystanders should be a safe distance from the machine when in operation.

Be sure machine is attached securely to the tractor before operating or transporting.

Inspect the machine daily. Lubricate and repair or replace parts as needed.

Maintain and keep all Safety Shields in place.

Before operating the machine inspect for loose or damaged bolts or parts and make necessary repairs before starting.

Do not operate or transport on steep slopes.

Do not operate or transport equipment while under the influence of drugs or alcohol.

Never go underneath equipment unless it is properly blocked or secured.

Add weight to the front of the tractor as needed to maintain safe steering traction.

Lower attachment to the ground, apply parking brake and stop tractor engine before dismounting tractor.

Never perform service or maintenance with engine running.

Keep hands, feet and clothing away from moving parts.

Never transport faster than surface conditions allow.

Display the SMV Emblem when transporting with a tractor.

Make sure you are in compliance with all local regulations regarding transporting agriculture equipment on public roads and highways. Consult your local law enforcement agency for further details.

Ensure that the Slow Moving Emblem (SMV) and all reflectors and lights required by the local highway and transport authorities are in place and are clean and visible by overtaking and oncoming traffic.

Power unit must be equipped with ROPS or ROPS cab and seat belt. Keep seat belt securely fastened.

Always sit in the tractor seat when operating controls or starting engine.

Know and understand your controls and how to stop engine and attachment quickly.

Store implements in an area children normally do not play.

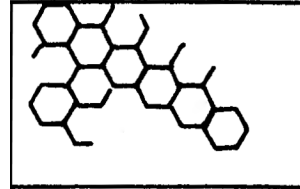
Decals

Important: Many of the following Decals are located on your Soil Pulverizer. Before you operate the Soil Pulverizer, read and understand the purpose for each Decal. Replace any damaged Decals. Keep all Decals clear and readable.

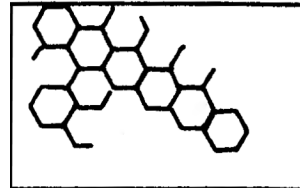
1.



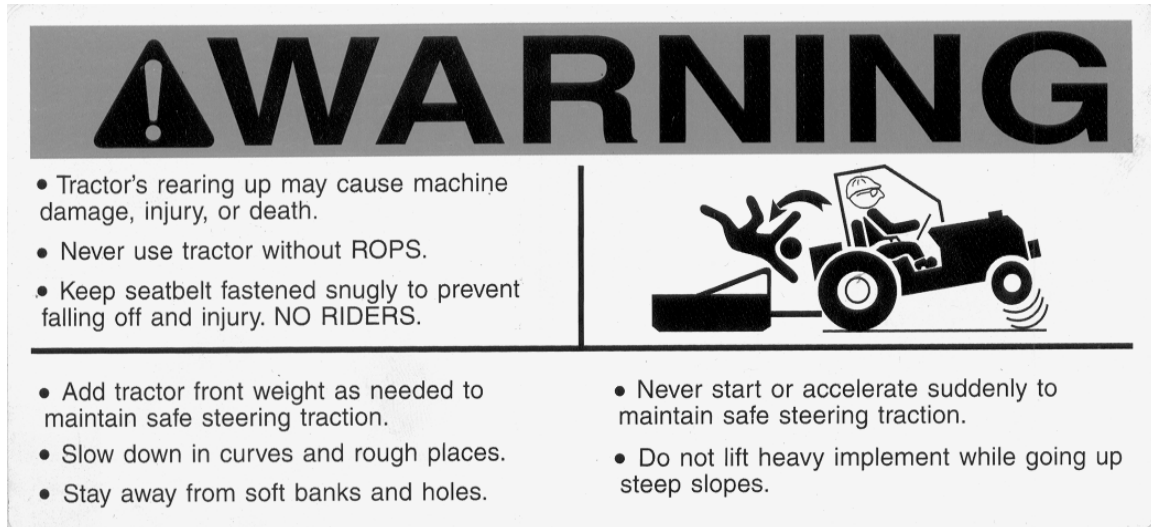
2.



3.



4.



Item No.	Part No.	Description	Qty.
1	51132	Decal, Warning Operating	1
2	B489A	Decal, Amber Reflector	2
3	0-71	Decal, Red Reflector	2
4	P120	Decal, Warning, Front Weight	1

Specifications

<i>Model</i>	<i>UP5</i>	<i>UP6</i>
Working Width	60"	72"
Weight	645 lbs.	775 lbs.
Required HP (Max.)	45	50
Number of Spikes	15 Front - 15 Back	18 Front - 18 Back
Spikes	5/8" x 8 1/2"	5/8" x 8 1/2"
Packerizer Roller diameter	9 1/2"	9 1/2"
Roller Shaft diameter	1 3/4"	1 3/4"
Bearings	1 3/4" self-aligning	1 3/4" self-aligning
Spike	2"	2"
A Frame	3/8" Formed Plate	3/8" Formed Plate
Hitch	Cat I	Cat I
Specifications subject to change without notice		

Operation

WARNING!



Tractor must be equipped with ROPS or ROPS cab and seat belt. Keep seat belt securely fastened.

WARNING!



Never allow children or untrained persons to operate equipment.

Pre-operation check list

Make sure tractor ROPS or ROPS cab and seat belt are in good condition.

Check that equipment is properly and securely attached to the power unit.

Check that all hardware is properly installed and secured.

Review all safety rules and safety decal instructions.

Check all lubrication points and lubricate as needed.

Check that tractor has sufficient front end weight for safe operation.

Attaching Utility Packer to tractor

Position the Utility Packer behind the tractor on a level dry area. Attach the lower 3 point lift arms of tractor to the Utility Packer lift pins. Secure with lynch pins. Attach tractor top link to Utility Packer using the pin provided. Initial adjustment of the top link must be made on level ground. Lower Utility Packer to the ground and extend or retract the top link to level Utility Packer. Raise and lower the Utility Packer through the tractors full lift range making sure the Utility Packer does not come in contact with any tractor component.

Adjusting the Top Link

The Utility Packer should be adjusted in the level position under normal conditions. However the unit may have to be pitched forward or rearward depending on soil conditions and the job being done. It may be necessary to experiment to determine the best setting.

General Operating Instructions

Before using the Utility Packer on any job first remove any large sticks, limbs, tree stumps, rocks, concrete or debris from the area. Do not attempt to tear up tree stumps, concrete, black top, asphalt or large rocks with the Utility Packer.

Controlling and maintaining the Utility Packer operating depth can be accomplished by using either the constant draft control or implement position control stops. It is usually better to use the implement position control during the initial portion of the job. Switching to the control draft will speed up the work when the grade finish becomes more established. In order to determine which setting is best for your present operation it may be necessary to experiment with both settings.

The scarifying and pulverizing action will begin as soon as the Utility Packer touches the ground and is moving. Operate at a maximum ground speed of 5 mph. Do not turn with the unit in the ground. Damage to the Utility Packer could occur.

When excessive debris or hard conditions exist, pitch the Utility Packer forward to optimize performance. This can be accomplished by adjusting the top link.

If soil is building up on the rear roller, operations should be discontinued until the ground has dried. More than one pass may be necessary on any job to achieve the desired finish.

The Spike Teeth can be raised or lowered by loosening the u-bolt and moving the teeth. Be sure to retighten the u-bolt. Do not lower the Spike Teeth more than 4 ½" below the frame. The optimum operating position depends on the soil condition and the type of finish desired.

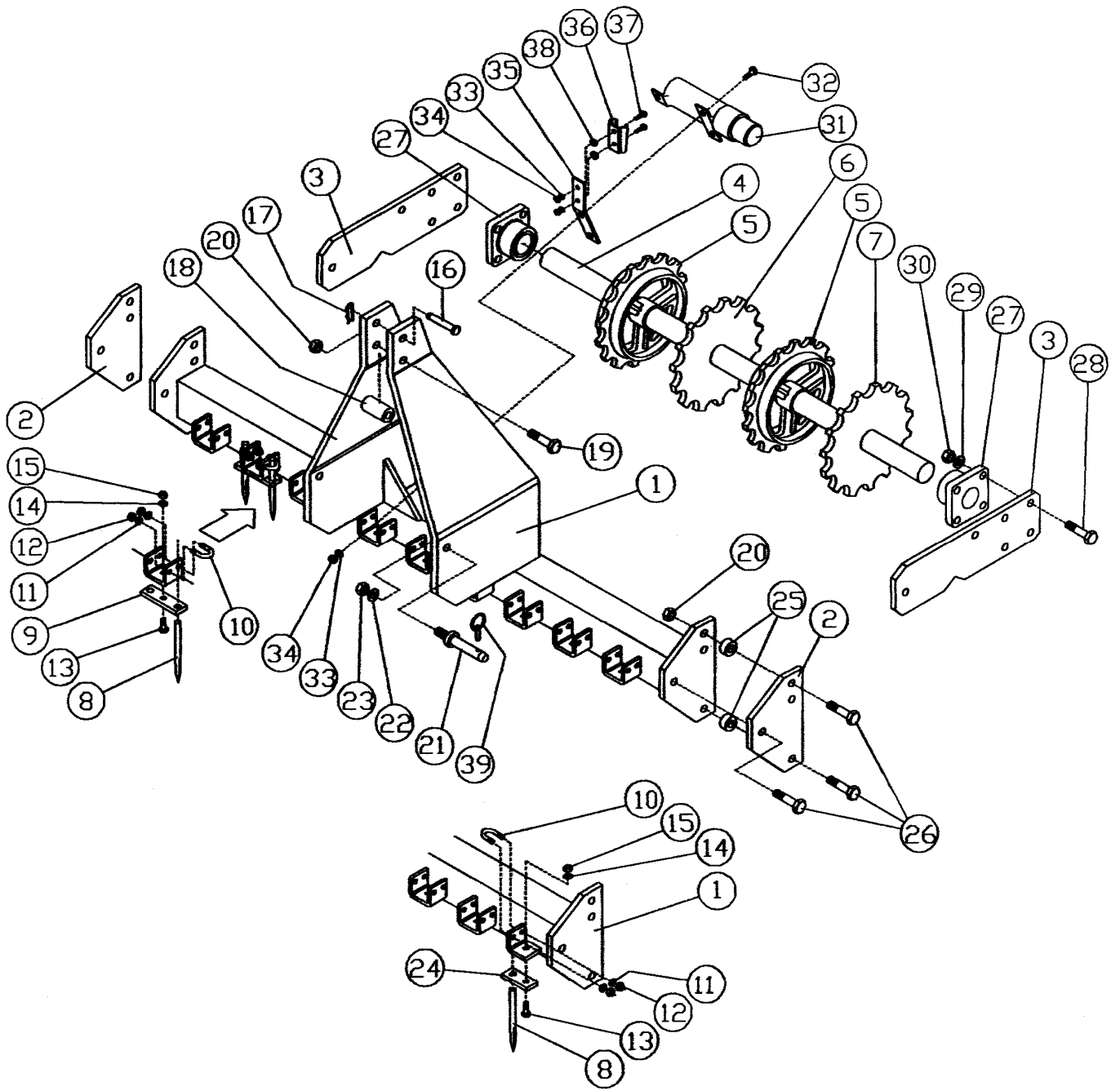
Maintenance

After the first hour of operation check to see that all hardware is secure and tighten if necessary.

After each use inspect the unit and replace any worn or damaged parts as well as any decals that are missing or not readable.

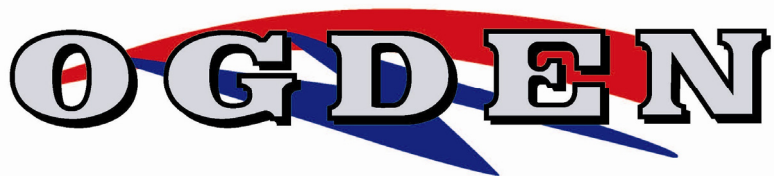
Lubricate the Rear Roller bearings every 10 hours with multipurpose grease.

Notes



Utility Packer Parts List

Item	Part No.	Description	UP5	UP6
1	UP100	Hitch & Frame Weldment, 60"	1	
	UP101	Hitch & Frame Weldment, 72"		1
2	P102	Roller Arm Attaching Plate	2	2
3	P103	Roller Arm	2	2
4	P108	Packer Roller Shaft, 1 3/4" x 60 3/4"	1	
	P109	Packer Roller Shaft, 1 3/4" x 72 3/4"		1
5	P105	Packer Wheel, 9 1/2"	21	25
6	P106	Packer Wheel Spacer, 3/8"	23	23
7	P107	Packer Wheel Spacer, 1/4"		
8	P111	Spike, 8 1/2"	30	36
9	P113	Alignment Plate, 3 Hole	14	18
10	P112	V Bolt, 3/8" x 2 1/2"	30	36
11	0-158	Lockwasher, 3/8"	60	72
12	0-159	Hex Nut, 3/8"	60	72
13	K-303	Capscrew, 1/2" x 1 1/2" GR5	16	18
14	0-173	Lockwasher, 1/2"	16	18
15	0-153	Hex Nut, 1/2"	16	18
16	P116	Top Link Pin	1	1
17	K-232	Hairpin	1	1
18	P117	Bushing	1	1
19	K-318	Capscrew, 3/4" x 4" GR5	1	1
20	K-320	Hex Nylock Nut, 3/4"	7	7
21	K-203	Hitch Pin, Cat I	2	2
22	K-227	Lockwasher, 7/8"	2	2
23	K-228	Hex Nut, 7/8"	2	2
24	P114	Alignment Plate, 2 Hole	2	
25	P104	Spacer, 1/2"	4	4
26	MCH3425	Capscrew, 3/4" x 2 1/2" GR5	6	6
27	P110	Flange Bearing, 1 3/4" UCF209-28	2	2
28	0-156	Capscrew, 5/8" x 2" GR5	8	8
29	0-155	Lockwasher, 5/8"	8	8
30	0-154	Hex Nut, 5/8"	8	8
31	MH	Manual Canister	1	1
32	0-175	Capscrew, 5/16" x 1" GR5	3	3
33	0-176	Lockwasher, 5/16"	3	3
34	0-177	Hex Nut, 5/16"	3	3
35	P118	Mounting Bracket	1	1
36	MC117	SMV Bracket	1	1
37	K-333	Carriage Bolt, 5/16" x 1 1/2"	2	2
38	MCH38F	Flatwasher, 3/8"	2	2
39	K-340	Lynch Pin, 13/32" Dia.	2	2



Warranty Policy

Ogden Metalworks, Inc. warrants this product to be free from defects in material and or workmanship under normal use and service, when set up and operated as intended and under normal service and conditions and in accordance with the instruction manual, for one year from the date of delivery by the dealer to the original purchaser. Ogden Metalworks, Inc.'s obligation under this warranty is limited to the replacement of any part or parts which are determined defective by Ogden Metalworks, Inc. due to factory workmanship and or material. This warranty does not cover common wear items. Credit for required labor will be issued at the company's discretion.

This warranty is void on any unit which has been modified or which has been subject to misuse, negligence or accident. Ogden Metalworks, Inc., reserves the right to request the return of any part in question to be sent to the factory for inspection. All returned parts must be sent to the factory freight prepaid.

This warranty is extended solely to the original purchaser and is not transferable. This warranty is not valid unless the warranty card has been returned to Ogden Metalworks, Inc. within 30 days from the date of purchase by the end user.

Ogden Metalworks, Inc.

Ogden Metalworks, Inc. reserves the right to change specifications and dimensions without notice.

Warranty will not be valid unless card is returned

Utility Packer Warranty Card

Please print Purchased Date _____

Name _____

Address _____

Address _____

Serial Number _____ Model _____

Dealer _____

Address _____